

ST20A/ST20B (C560/C561)

PARTS CATALOG

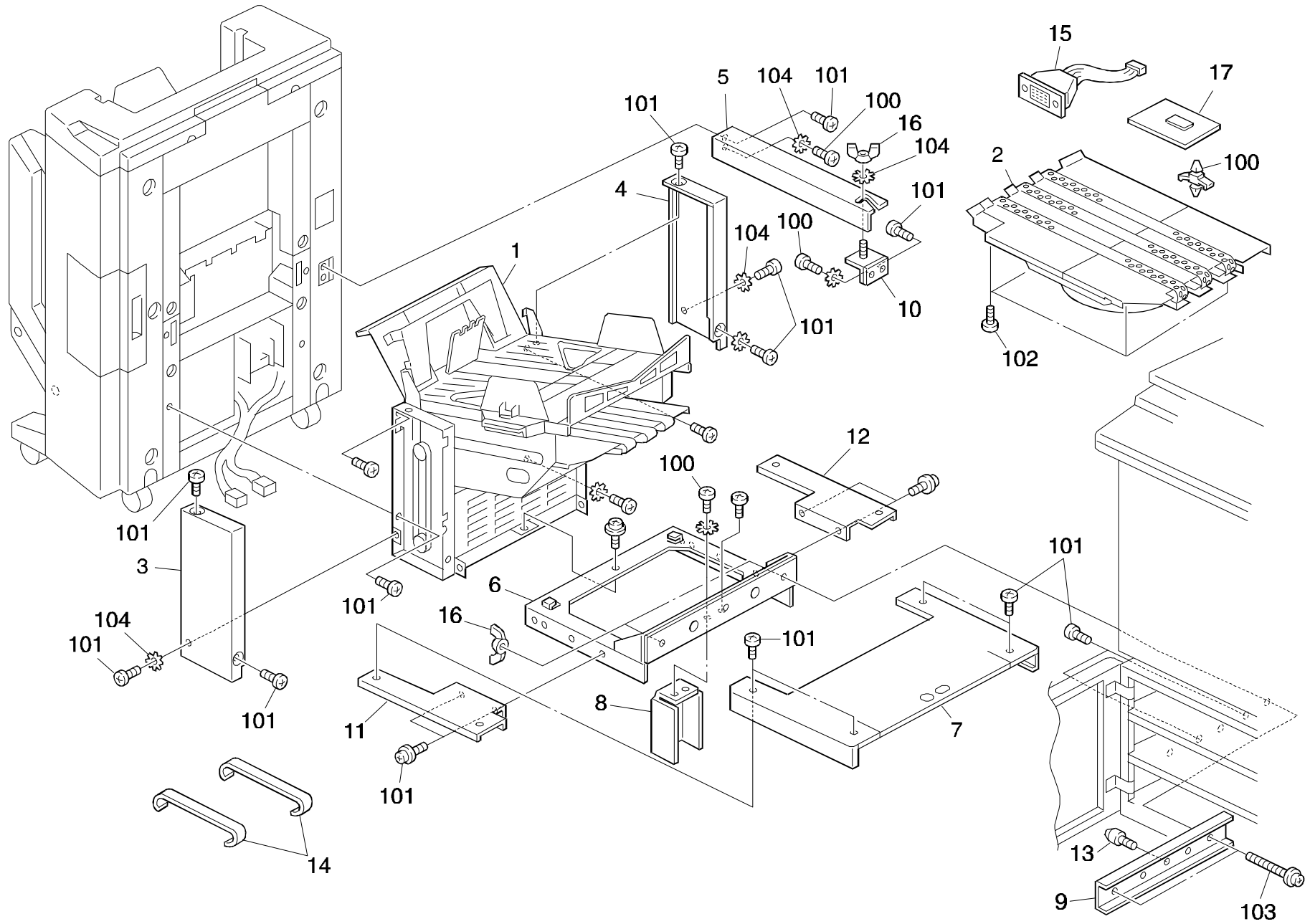
INTRODUCTION

This chapter instructs you the numbers and names of parts on this machine.

INDEX to PARTS CATALOG

1.1st Transport Section (C560)	2
2.1st Transport Unit (C560)	4
3.1st Delevry Table 1 (C560).....	6
4.1st Delevry Table 2 (C560).....	8
5.1st Paper Tray Unit (C560).....	10
6.2nd Transport Section (C561)	12
7.2nd Transport Unit (C561).....	14
8.1st Sorter Exterior (C560).....	16
9.2nd Sorter Exterior (C561)	18
10.Sorter Section 1 (C560/C561)	20
11.Sorter Section 2 (C560/C561)	22
12.Sorter Section 3 (C560/C561)	24
13.Sorter Bin Section (C560/C561)	26
14.Staple Unit 1 (C560/C561)	28
15.Staple Unit 2 (C560/C561)	30
PARTS INDEX	33

1. 1ST TRANSPORT SECTION (C560)

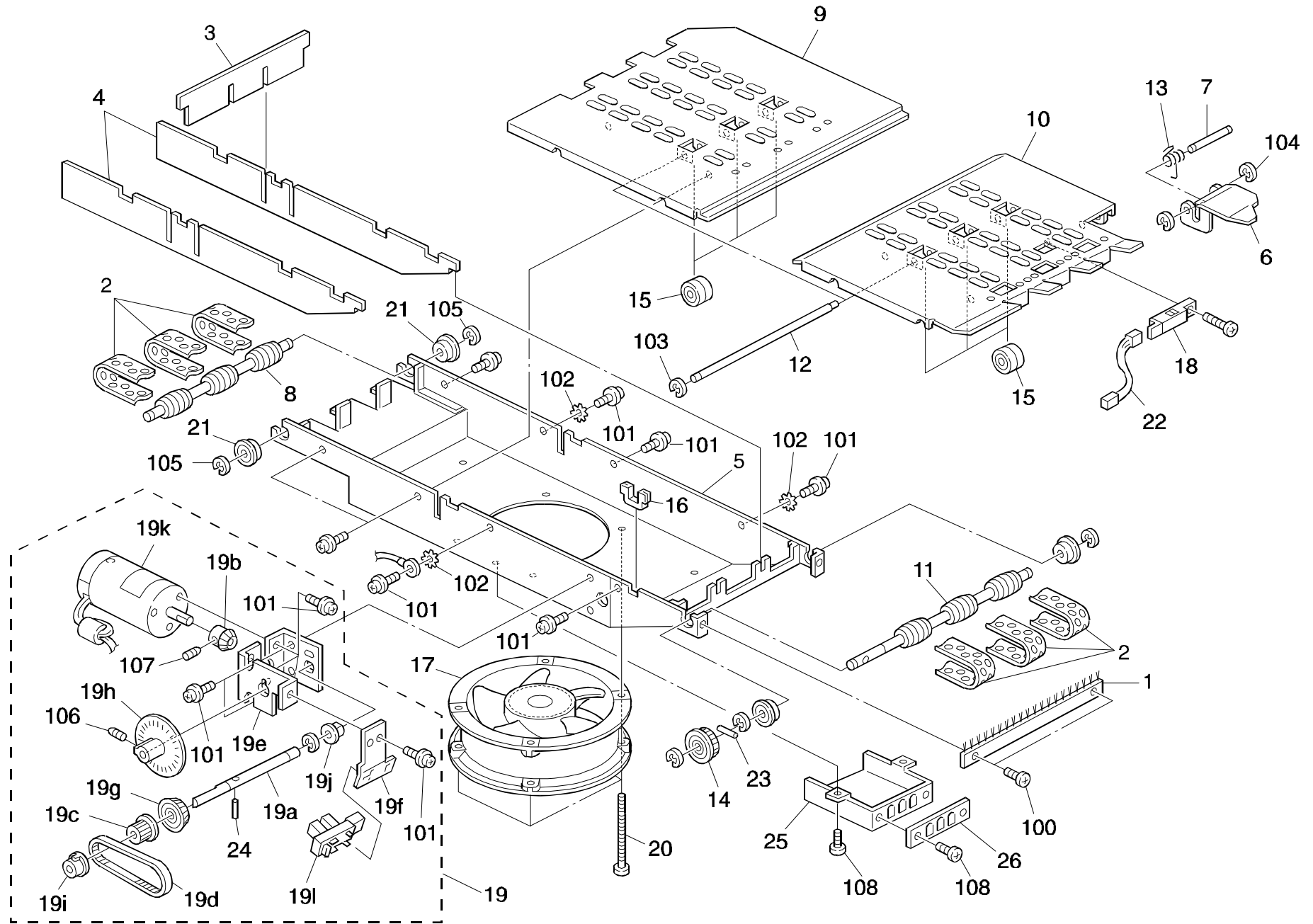


1. 1ST TRANSPORT SECTION (C560)

Index No.	Part No.	Description	Q'ty Per Assembly
1	VFM6 0689	Lift Unit	1
2	VFM6 0686	Transfer Unit	1
3	VFE6 2651	Front Cover	1
4	VFE6 2652	Rear Cover	1
5	VFE6 2654	Rear Stay	1
6	VFE6 2655	Joint Plate	1
7	VFE6 2656	Joint Cover	1
8	VFE6 2657	Support Plate	1
9	VFE6 2658	Back Plate	1
10	VFE6 2659	Stay Bracket	1
11	VFE6 2666	Stay Front Cover	1
12	VFE6 2670	Stay Rear Cover	1
13	VFA6 1023	Adjusting Pin	1
14	VFE6 2647	Paper Tray Stopper	2
15	VFM6 0657	IPC Harness	1
16	VFS0 9026	Buttfley Nut	2
17	VFM6 0663	Sorter Interface Board	1

Index No.	Part No.	Description	Q'ty Per Assembly
100	1105 0312	Spacer	
101	0354 0060D	Sunk Screw - 4x6	
102	0951 4006W	Philips Screw With Flat Waser-M4x6	
103	0951 4010W	Philips Screw With Flat Waser-M4x10	
104	0705 0040B	Toothed Washer	

2. 1ST TRANSPORT UNIT (C560)

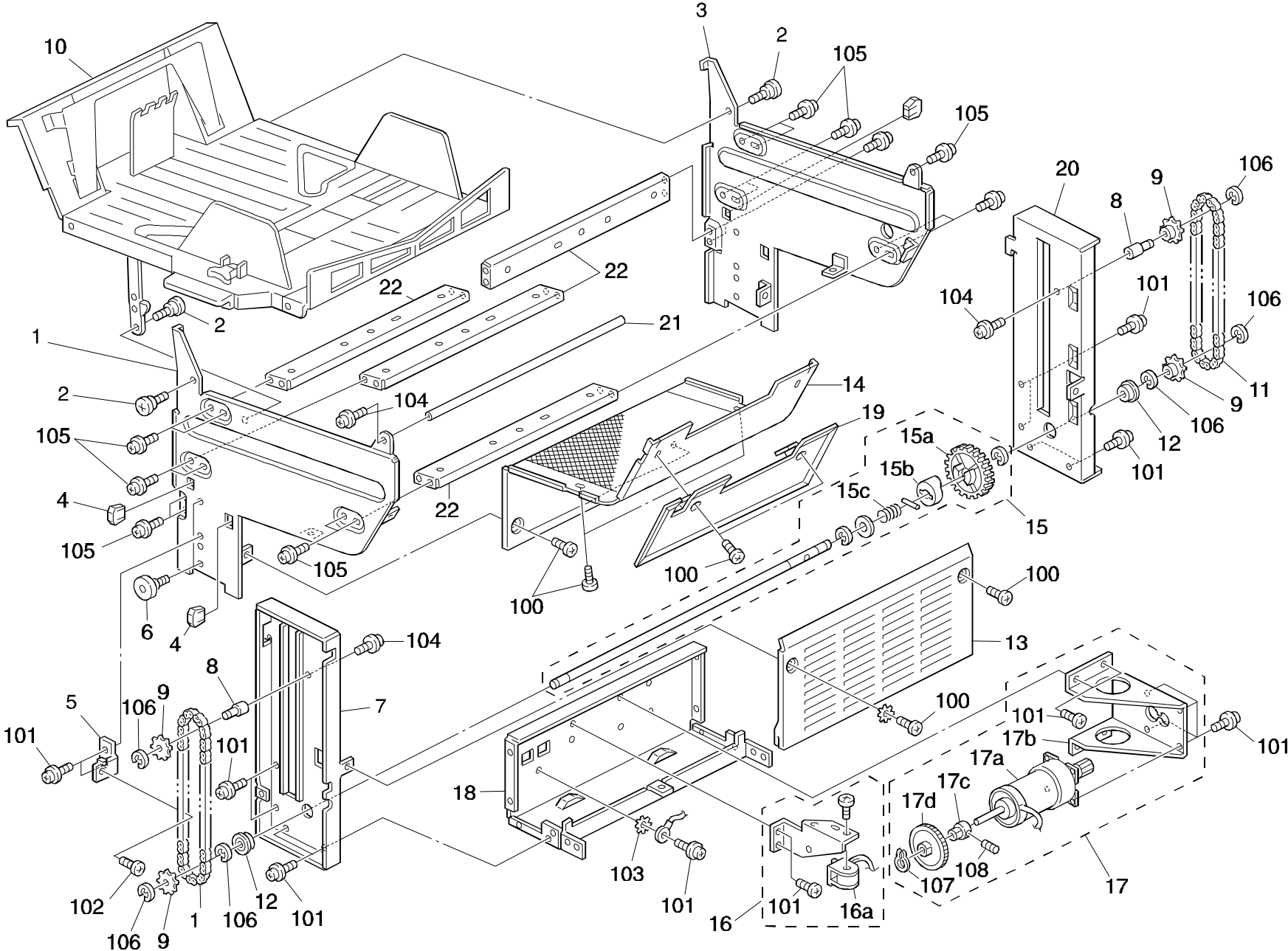


2. 1ST TRANSPORT UNIT (C560)

Index No.	Part No.	Description	Q'ty Per Assembly
1	VFE6 2677	Belt Drive Shaft	1
2	VFE6 2687	Transfer Belt	6
3	VFE6 2697	Middle Support Plate	1
4	VFE6 2698	Support Plate	2
5	VFE6 2699	Buccume Fan Box	1
6	VFE6 2708	Jumper Plate	1
7	VFE6 2709	Jumper Shaft	1
8	VFE6 2686	Belt Driven Shaft	1
9	VFE6 2738	Middle Right Guide	1
10	VFE6 2739	Middle Left Guide	1
11	VFE6 2741	Antistatic Brush	1
12	VFE6 2682	Transfer Shaft	1
13	VFS0 2079	Jumper Spring	1
14	VFS0 3122	Pulley - 30Z	1
15	VFS2 6305	Exit Roller	2
16	VWT2 5035	Edge Sadle	1
17	VFK6 7127	Vaccum Fan Motor	1
18	VFK6 7835	Photointerruptor	1
19	VFM6 0687	Transfer Moter Ass'y	1
19a	VFE6 2681	Drive Gear Shaft	1
19b	VFS0 0107	Bevel Gear	1
19c	VFS0 3121	Pulley - 20Z	1
19d	VFE6 2685	Timing Belt - 240	1
19e	VFE6 2702	Transfer Motor Bracket	1
19f	VFE6 2703	Sensor Bracket	1
19g	VFS3 0089	Bevel Gear	1
19h	VFA5 4876	Encoder	1
19i	VFS1 1190	Bushing	1
19j	VFS1 1213	Bushing - 6mm	1
19k	VFK6 7128	Transfer Motor	1
19l	VWG8 5038	Photointerrupter	1
20	C560 9002	Screw - M4x55	1
21	C560 9003	Bearing - M14	2
22	VFM6 0655	Sensor Relay Harness	1
23	C560 9007	Pallarel Pin - 3x12	1

Index No.	Part No.	Description	Q'ty Per Assembly
24	C560 9008	Pallarel Pin - 2x8	1
25	VFE6 2780	Relay Duct	1
26	VFE6 2782	Duct Fin	1
100	0353 0040W	Philips Pan Bind Screw - M3x4	
101	0951 4006W	Philips Screw With Flat Waser-M4x6	
102	0705 0040B	Toothed Washer	
103	C560 9009	Retaining Ring - M2.4	
104	C560 9010	Retaining Ring - M3.2	
105	0720 0060Z	Retaining Ring - M6	
106	0553 0060E	Allen Screw - M3x6	
107	0554 0060E	Allen Screw - M4x6	
108	0951 3006W	Philips Screw With Flat Waser-M3x6	

3. 1ST DELEVERY TABLE 1 (C560)

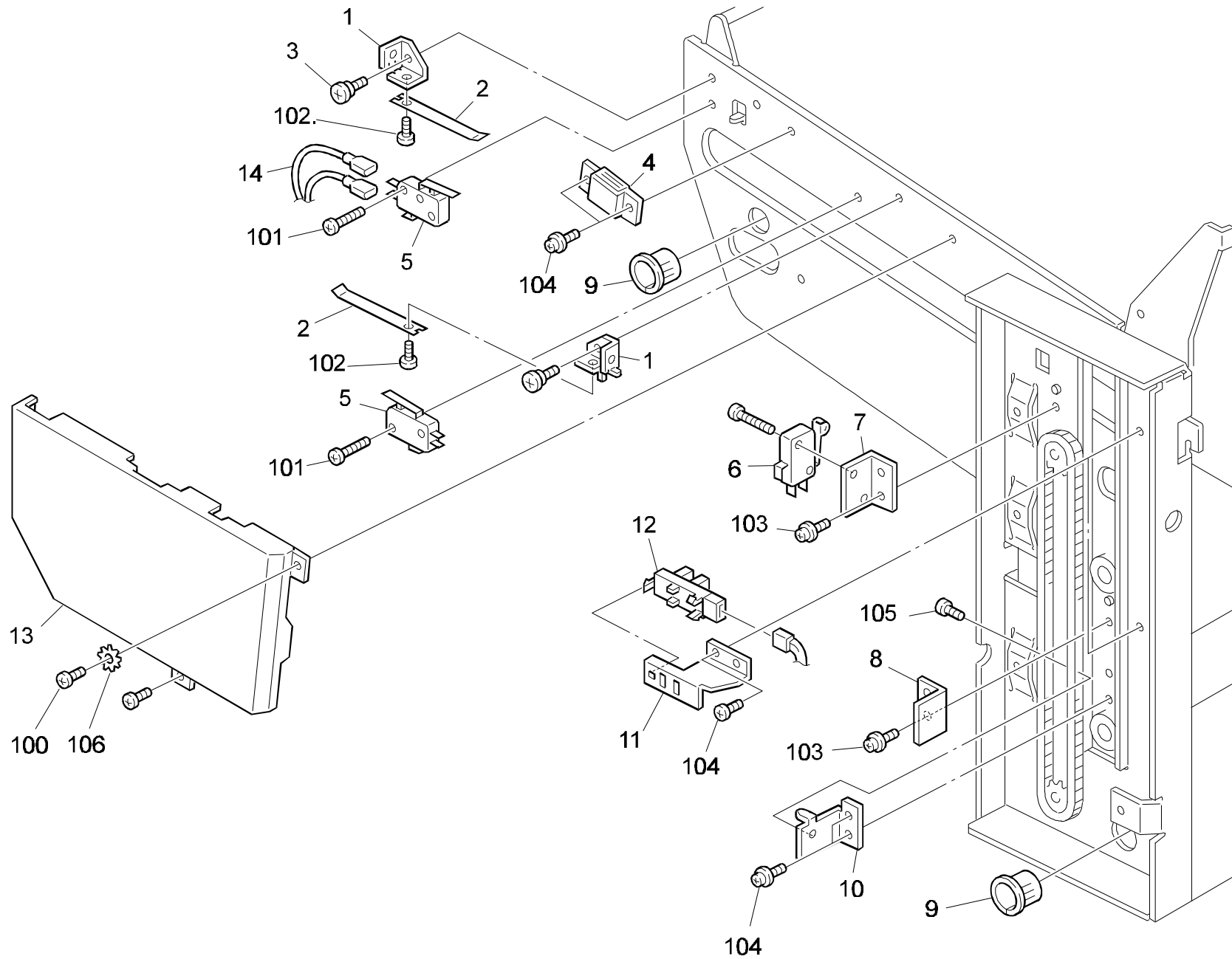


3. 1ST DELEVERY TABLE 1 (C560)

Index No.	Part No.	Description	Q'ty Per Assembly
1	VFE6 2630	Front Side Plate - Tray	1
2	VFS1 9076	Stepped Screw - M1.9	4
3	VFE6 2631	Rear Side Plate - Tray	1
4	VFE6 2636	Slide Core	2
5	VFE6 2637	Front Chain Holder	1
6	VXG9 0097	Bearing	1
7	VFE6 2628	Front Side Plate	1
8	VFE6 2642	Sprocket Shaft	2
9	VFS1 3067	Sprocket	4
10	VFM6 0693	Copy Tray Ass'y	1
11	VFE6 2742	Roller Chain 25	2
12	C560 9001	Bearing	2
13	VFE6 2653	Lower Right Cover	1
14	VFE6 2648	Middle Fan Cover	1
15	VFM6 0692	Lift Drive Shaft Ass'y	1
15a	VFE6 2646	Gear - 54	1
15b	VFE6 2645	Clutch	1
15c	VFS0 2076	Clutch Spring	1
16	VFM6 0691	Brake	1
16a	VFL6 0688	Brake Solenoid	1
17	VFM6 0690	Lift Motor Ass'y	1
17a	VFL6 0678	Lift Motor	1
17b	VFE6 2634	Lift Motor Bracket	1
17c	VFE6 2644	Adaptor	1
17d	VFA2 6523	Brake Plate	1
18	VFL6 0691	Lift Motor Stay	1
19	VFE6 2672	Safety Cover	1
20	VFE6 2629	Rear Side Plate	1
21	VFE6 2650	Support Stay	1
22	VFE6 2633	Middle Stay	4

Index No.	Part No.	Description	Q'ty Per Assembly
100	0354 0060D	Sunk Screw - 4x6	
101	0951 4006W	Philips Screw With Flat Waser-M4x6	
102	0354 0100Z	Bind Screw - M4x10	
103	0705 0040B	Toothed Washer	
104	0951 5006Z	Philips Pan Head Screw W/W - M5x6	
105	0954 0006Z	Philips Pan Head Screw W/W - M4x6	
106	C560 9012	Retaining Ring - M6.4	
107	0725 0080Z	Retaining Ring - M6.4	
108	0553 0060E	Allen Screw - M3x6	

4. 1ST DELEVERY TABLE 2 (C560)

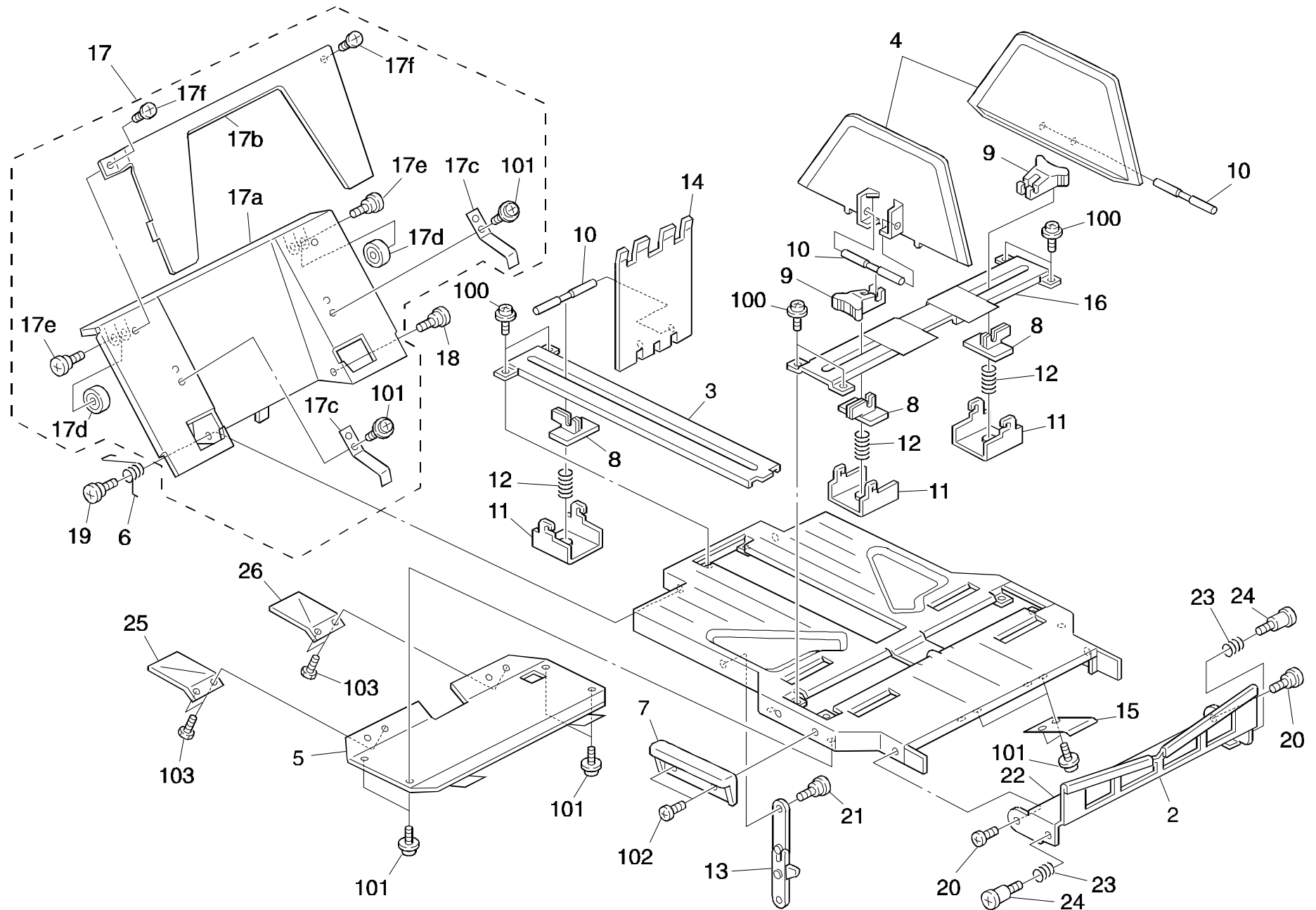


4. 1ST DELEVERY TABLE 2 (C560)

Index No.	Part No.	Description	Q'ty Per Assembly
1	VFE6 2732	Spring Plate Holder	2
2	VFE6 2733	Sensor Spring	2
3	VFS2 9394	Stepped Screw - M1.4	1
4	VXZ9 0326	Magnet Catch	1
5	VFK6 7620	Microswitch	2
6	VFK6 7611	Microswitch	1
7	VFE6 2640	Limit Sensor Bracket	1
8	VFE6 2643	Sensor Actuator	1
9	VWT2 0256	Edge Sadle	2
10	VFE6 2638	Rear Chain Holder	1
11	VFE6 2639	Sensor Bracket	1
12	VWG8 5038	Photointerrupter	1
13	VFE6 2649	Sensor Cover	1
14	VFM6 0658	Sensor Harness	1

Index No.	Part No.	Description	Q'ty Per Assembly
100	0354 0060D	Sunk Screw - 4x6	
101	0353 0160W	Philips Pan Head Screw - M3x16	
102	0353 0040W	Philips Pan Bind Screw - M3x4	
103	0951 4006W	Philips Screw With Flat Waser-M4x6	
104	0951 3006W	Philips Screw With Flat Waser-M3x6	
105	0353 0060W	Philips Pan Head Screw - M3x6	
106	0705 0040B	Toothed Washer	

5. 1ST PAPER TRAY UNIT (C560)

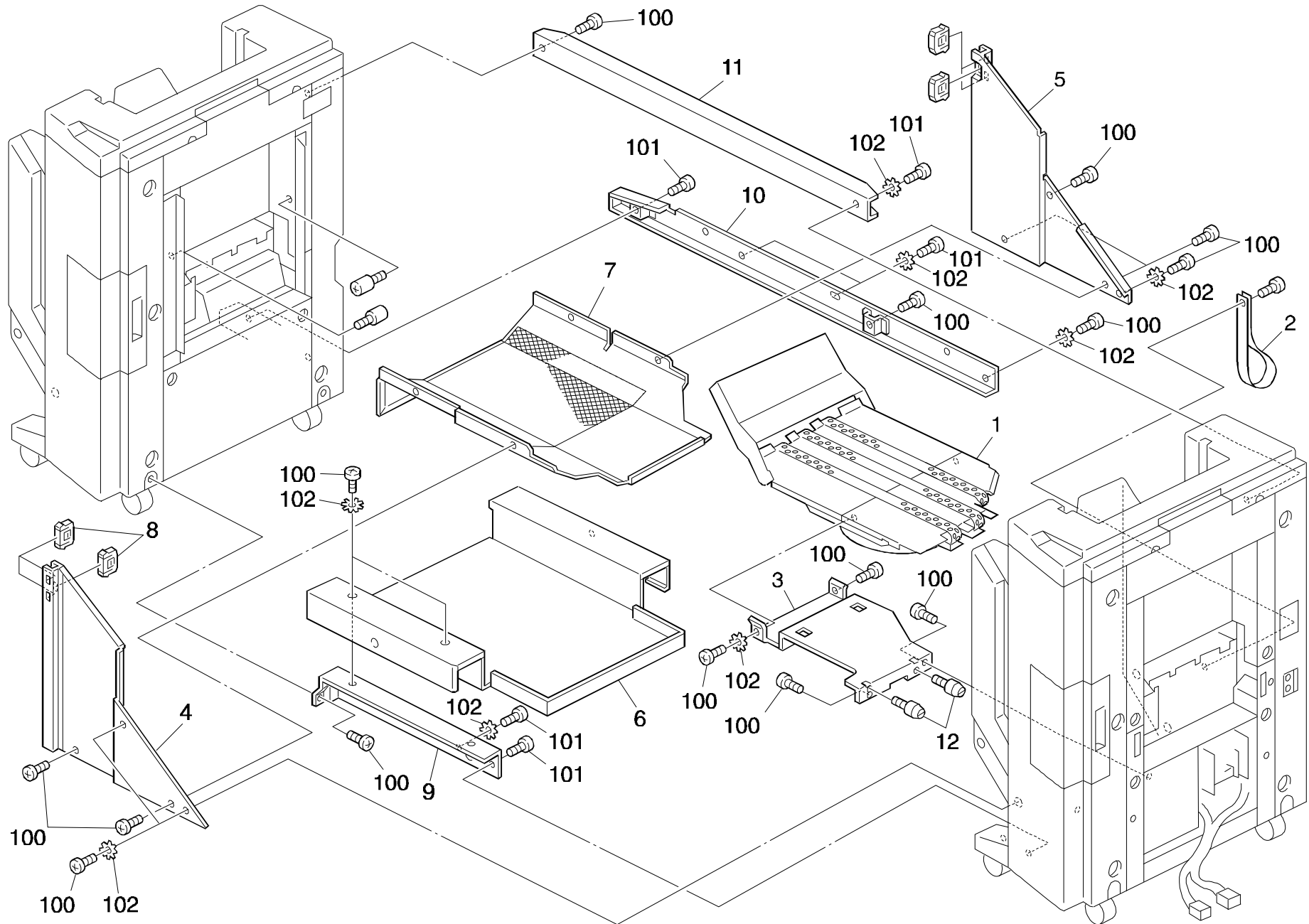


5. 1ST PAPER TRAY UNIT (C560)

Index No.	Part No.	Description	Q'ty Per Assembly
1	VFE6 2721	Copy Tray	1
2	VFE6 2722	Sub Tray	1
3	VFE6 2723	End Fence Rail	1
4	VFE6 2710	Side Fence	2
5	VFE6 2707	Tray Lower Cover	1
6	VFS0 2074	Cover Spring	1
7	VFE6 2743	Grip	1
8	C209 6142	Guide Fence Slider	3
9	C209 6143	Guide Fence Knob	2
10	C209 6144	Guide Fence Shaft	3
11	C209 6145	Guide Fence Bracket	3
12	C209 6149	Guide Fence Spring	3
13	C209 3141	Stopper - Scanner Unit	1
14	C207 6132	Support End Fence	1
15	VFE6 2758	Tray Spring	2
16	VFL6 0686	Side Fence Guide Rail	1
17	VFM6 0694	Staple Cover Ass'y	1
17a	VFE6 2725	Staple Cover	1
17b	VFE6 2724	Staple End Fence	1
17c	VFE6 2736	End Fence Spring	2
17d	VFS2 6304	Roller - 20	2
17e	VFS1 9073	Stepped Screw - 8.2	2
17f	VFS1 9076	Stepped Screw - M1.9	2
18	VFS2 9394	Stepped Screw - M1.4	1
19	VFS2 9461	Stepped Screw - M4	1
20	VFS1 9076	Stepped Screw - M1.9	1
21	VFS1 9010	Stepped Screw - M2.2	1
22	V4F1 0171	Front Cover	1
23	VFS0 2080	End Spring	1
24	VFS1 9166	Stepped Screw - M4	2
25	VFE6 2789	Front Upper Guide	1
26	VFE6 2790	Rear Upper Guide	1

Index No.	Part No.	Description	Q'ty Per Assembly
100	0951 3006W	Philips Screw With Flat Waser-M3x6	
101	0951 4006W	Philips Screw With Flat Waser-M4x6	
102	0354 0060D	Sunk Screw - 4x6	
103	VXA9 0679	Screw	

6. 2ND TRANSPORT SECTION (C561)

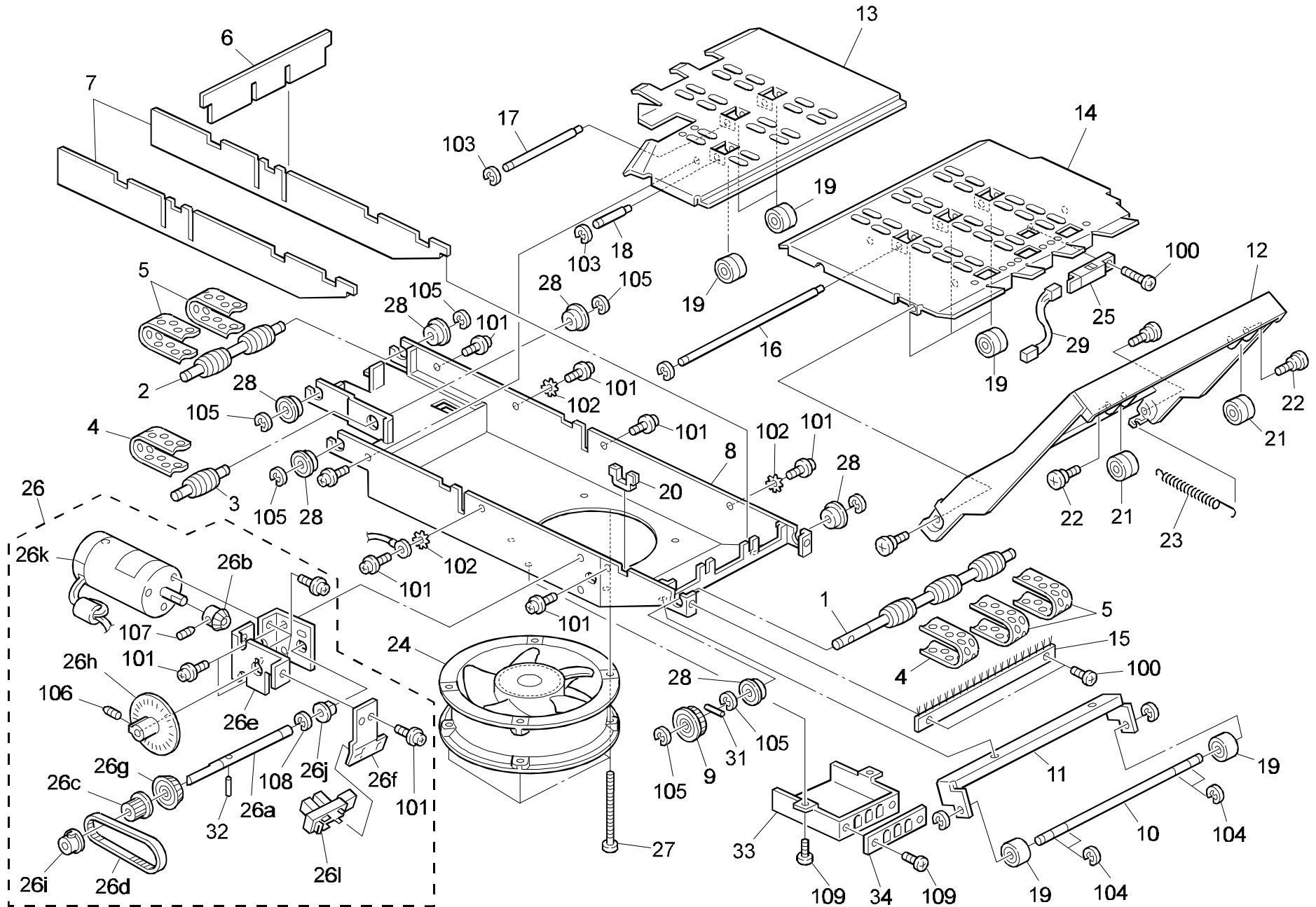


6. 2ND TRANSPORT SECTION (C561)

Index No.	Part No.	Description	Q'ty Per Assembly
1	VFM6 0696	Transfer Unit Ass'y	1
2	VFE6 2673	Hold Tape	1
3	VFE6 2701	Joint Stay	1
4	VFE6 2728	Joint Frint Cover	1
5	VFE6 2729	Joint Rear Cover	1
6	VFL6 0694	Joint Stay Cover	1
7	VFE6 2748	Joint Bottom Cover	1
8	VFE6 2636	Slide Core	6
9	VFA6 6416	Front Joint Stay	1
10	VFA6 6417	Rear Joint Stay	1
11	VFC1 9613	Upper Joint Stay	1
12	VFA6 1023	Adjusting Pin	2

Index No.	Part No.	Description	Q'ty Per Assembly
100	0354 0060D	Sunk Screw - 4x6	
101	0354 0100D	Sunk Screw - 4x10	
102	0705 0040B	Toothed Washer	

7. 2ND TRANSPORT UNIT (C561)

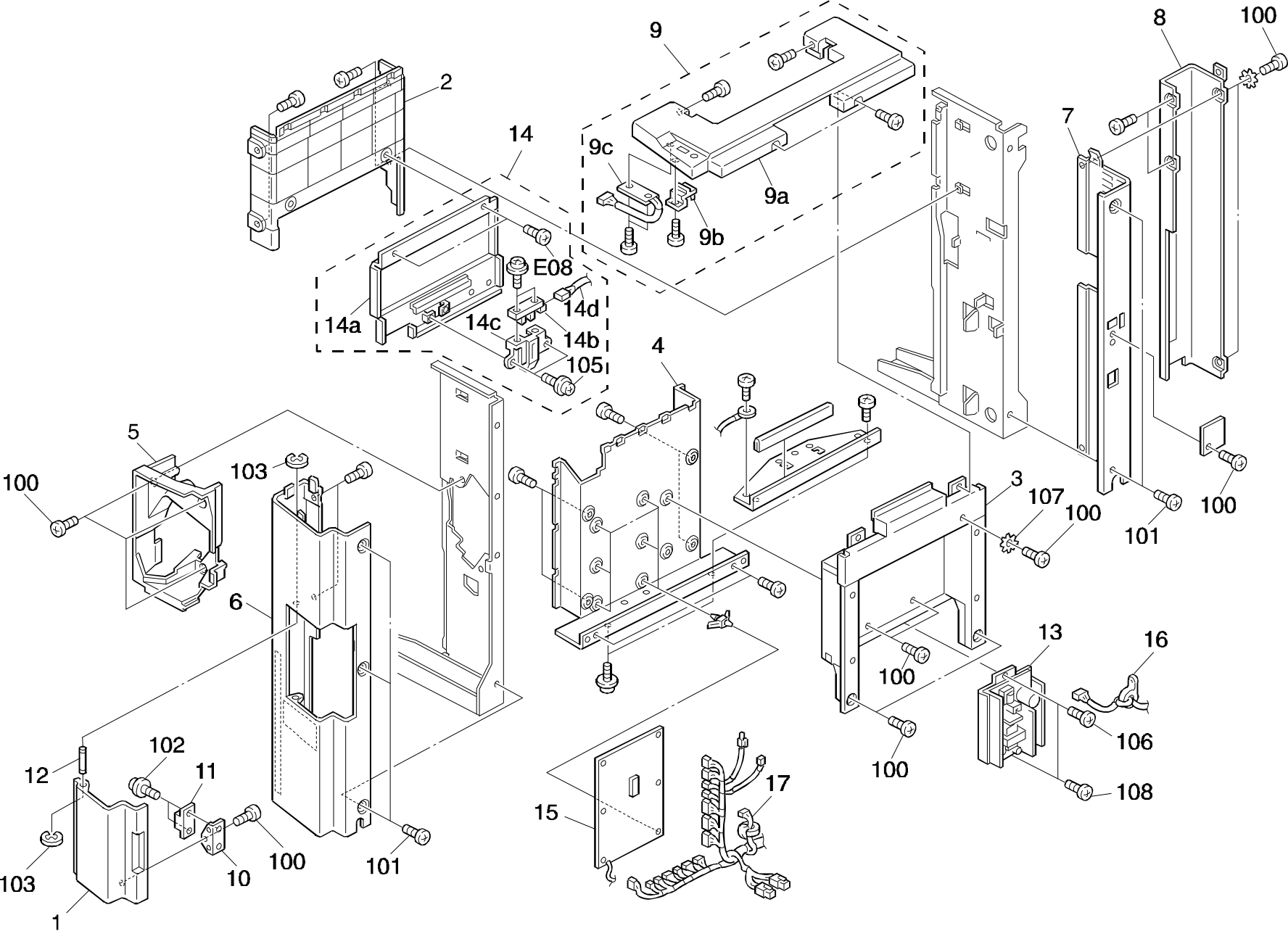


7. 2ND TRANSPORT UNIT (C561)

Index No.	Part No.	Description	Q'ty Per Assembly
1	VFE6 2677	Belt Drive Shaft	1
2	VFE6 2678	Belt Driven Shaft	1
3	VFE6 2696	Belt Driven Shaft	1
4	VFE6 2679	Transfer Belt - 1	2
5	VFE6 2680	Transfer Belt - 2	4
6	VFE6 2697	Middle Support Plate	1
7	VFE6 2698	Support Plate	2
8	VFE6 2700	Buccume Fan Box	1
9	VFS0 3122	Pulley - 30Z	1
10	VFE6 2690	Transfer Shaft	1
11	VFE6 2691	Transfer Shaft Holder	1
12	VFE6 2727	Transfer Cover	1
13	VFE6 2737	Right Cover	1
14	VFE6 2740	Left Cover	1
15	VFE6 2741	Antistatic Brush	1
16	VFE6 2682	Transfer Shaft	1
17	VFE6 2683	Tension Spring	1
18	VFE6 2684	Tension Spring	1
19	VFS2 6305	Exit Roller	8
20	VWT2 5035	Edge Sadle	1
21	VFS2 6304	Roller - 20	2
22	VFS1 9073	Stepped Screw - 8.2	2
23	VFS3 2178	Rear Guide Spring	1
24	VFK6 7127	Vaccum Fan Motor	1
25	VFK6 7835	Photointerruptor	1
26	VFM6 0687	Transfer Moter Ass'y	1
26a	VFE6 2681	Drive Gear Shaft	1
26b	VFS0 0107	Bevel Gear	1
26c	VFS0 3121	Pulley - 20Z	1
26d	VFE6 2685	Timing Belt - 240	1
26e	VFE6 2702	Transfer Motor Bracket	1
26f	VFE6 2703	Sensor Bracket	1
26g	VFS3 0089	Bevel Gear	1
26h	VFA5 4876	Encoder	1
26i	VFS1 1190	Bushing	1

Index No.	Part No.	Description	Q'ty Per Assembly
26j	VFS1 1213	Bushing - 6mm	1
26k	VFK6 7128	Transfer Motor	1
26l	VWG8 5038	Photointerrupter	1
27	C560 9002	Screw - M4x55	1
28	C560 9003	Bearing - M14	6
29	VFM6 0655	Sensor Relay Harness	1
30	VFM6 0653	Transfer Harness	1
31	C560 9007	Pallarel Pin - 3x12	1
32	C560 9008	Pallarel Pin - 2x8	1
33	VFE6 2781	Duct	1
34	VFE6 2782	Duct Fin	1
100	0353 0040W	Philips Pan Bind Screw - M3x4	
101	0951 4006W	Philips Screw With Flat Waser-M4x6	
102	0705 0040B	Toothed Washer	
103	C560 9009	Retaining Ring - M2.4	
104	C560 9010	Retaining Ring - M3.2	
105	0720 0060Z	Retaining Ring - M6	
106	0553 0060E	Allen Screw - M3x6	
107	0554 0060E	Allen Screw - M4x6	
108	0720 0050Z	Retaining Ring - M5	
109	0951 3006W	Philips Screw With Flat Waser-M3x6	

8. 1ST SORTER EXTERIOR (C560)

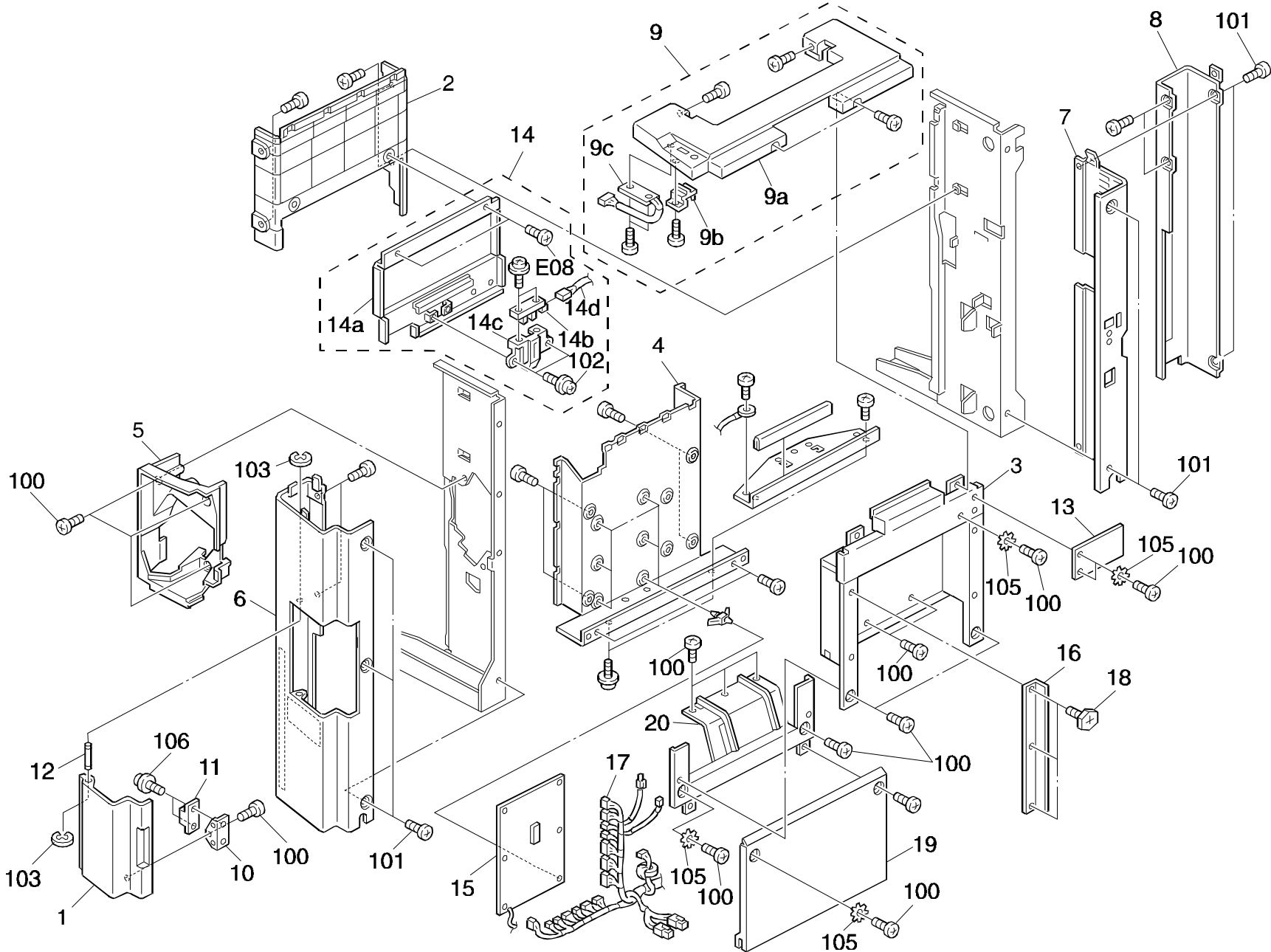


8. 1ST SORTER EXTERIOR (C560)

Index No.	Part No.	Description	Q'ty Per Assembly
1	VFL6 0689	Staple Door	1
2	VFE6 2719	Upper Left Cover	1
3	VFE6 2726	Upper Right Cover	1
4	VFM6 0709	Stapler Frame	1
5	VFA6 6247	Staple Inner Cover	1
6	V4F1 0171	Front Cover	1
7	VFL6 0695	Rear Left Cover	1
7	VFE6 2715	Rear Panel Cover	1
8	VFL6 0680	Rear Right Cover	1
9	VFM6 0710	Upper Cover Ass'y	1
9a	VFL6 0693	Upper Cover	1
9b	VFA6 6212	Staple Botton	1
9c	VFG1 8404	Operation Panel Ass'y	1
9d	VVD5 0161	Huse - 125V 1AS	1
10	VFA6 6229	Magnet Holder	1
11	VXZ9 0326	Magnet Catch	1
12	VFA5 4823	Door Hinge	1
13	VFK6 3209	Power Supply Unit	1
13	VFK6 3210	Power Supplu Unit - 230V	1
14	VFM6 0703	Left Cover Ass'y	1
14a	VFE6 2704	Left Cover	1
14b	VFH7 7023	Photointerrupter	1
14c	VRG1 0424	Sensor Ass'y	1
14d	VFM6 0656	Sensor Harness	1
15	VFM6 0662	DC Control Board A	1
16	VFM6 0664	DC Harness A	1
17	VFM6 0654	DC Harness B	1

Index No.	Part No.	Description	Q'ty Per Assembly
100	0354 0060D	Sunk Screw - 4x6	
101	0951 4006W	Philips Screw With Flat Waser-M4x6	
102	0951 2010W	Philips Pan Head Screw W/W - M2x10	
103	C561 9012	Retaining Ring - M6.4	
104	0353 0040D	Philips Pan Head Screw - M3x4	
105	0353 0080D	Philips Truus Head Screw - M3x8	
106	0354 0060W	Philips Truus Head Screw - M4x6	
107	0705 0040B	Toothed Washer	
108	0354 0060W	Philips Truus Head Screw - M4x6	

9. 2ND SORTER EXTERIOR (C561)

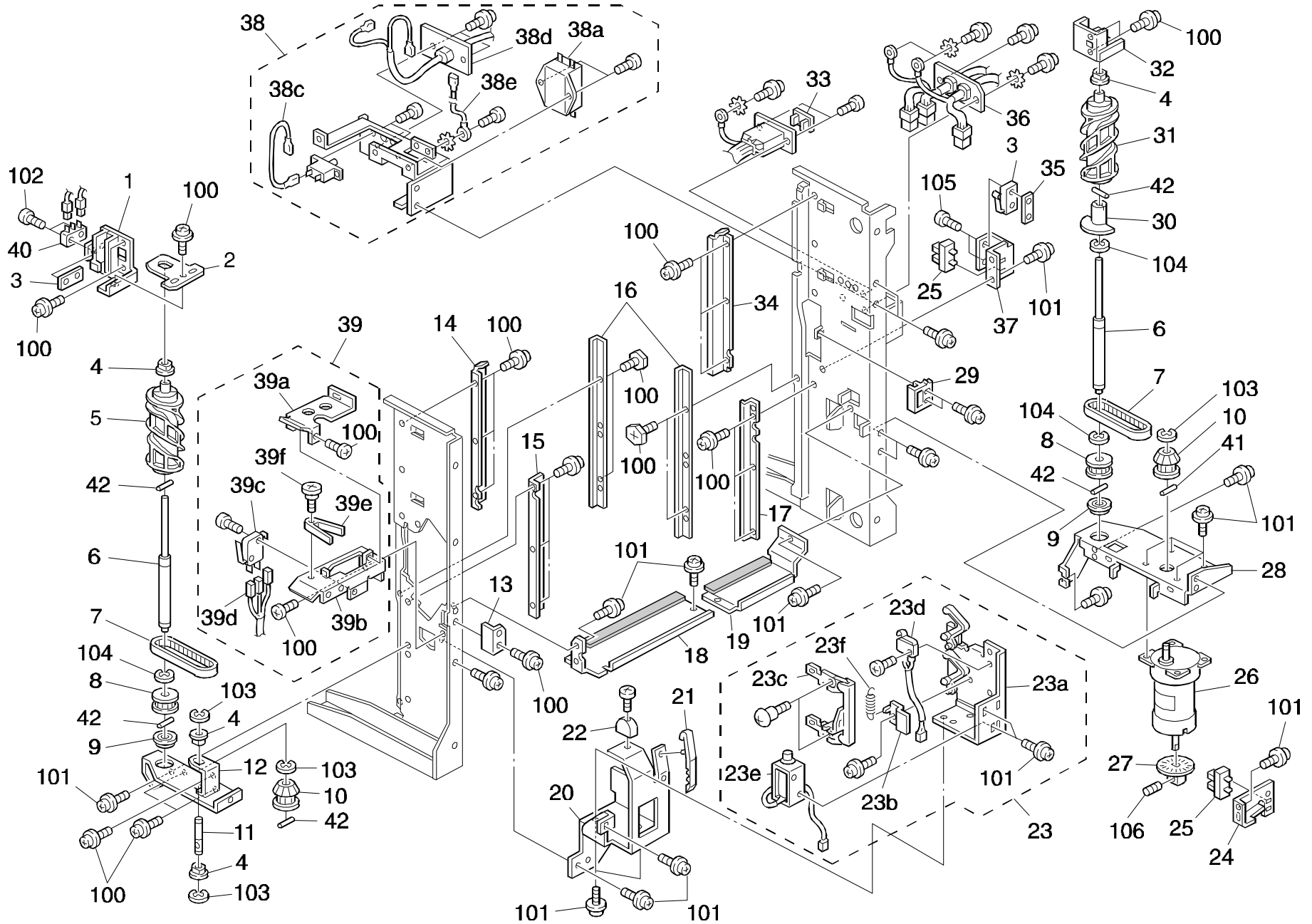


9. 2ND SORTER EXTERIOR (C561)

Index No.	Part No.	Description	Q'ty Per Assembly
1	VFL6 0689	Staple Door	1
2	VFE6 2719	Upper Left Cover	1
3	VFE6 2726	Upper Right Cover	1
4	VFM6 0709	Stapler Frame	1
5	VFA6 6247	Staple Inner Cover	1
6	V4F1 0171	Front Cover	1
7	VFL6 0696	Rear Right Cover	1
8	VFE6 2753	Rear Left Cover	1
9	VFM6 0683	Upper Cover Ass'y	1
9a	VFE6 2720	Upper Cover	1
9b	VFA6 6212	Staple Botton	1
9c	VFG1 8404	Operation Panel Ass'y	1
9d	VVD5 0161	Huse - 125V 1AS	1
10	VFA6 6229	Magnet Holder	1
11	VXZ9 0326	Magnet Catch	1
12	VFA5 4823	Door Hinge	1
13	VFE6 2734	Joint Cover	1
14	VFM6 0703	Left Cover Ass'y	1
14a	VFE6 2704	Left Cover	1
14b	VFH7 7023	Photointerrupter	1
14c	VRG1 0424	Sensor Ass'y	1
14d	VFM6 0656	Sensor Harness	1
15	VFM6 0662	DC Control Board A	1
16	VFE6 2730	Stapler Stay	1
17	VFM6 0654	DC Harness B	1
18	VFA4 6702	Hexagonal Headless Set Screw	3
19	VFE6 2676	Lower Right Cover	1
20	VFE6 2675	Paper Guide	1

Index No.	Part No.	Description	Q'ty Per Assembly
100	0354 0060D	Sunk Screw - 4x6	
101	0951 4006W	Philips Screw With Flat Waser-M4x6	
102	0353 0080D	Philips Truus Head Screw - M3x8	
103	C560 9612	Retaining Ring - M6.4	
104	0353 0040D	Philips Pan Head Screw - M3x4	
105	0705 0040B	Toothed Washer	
106	0951 2010Z	Philips Pan Head Screw W/W - M2x10	

10. SORTER SECTION 1 (C560/C561)

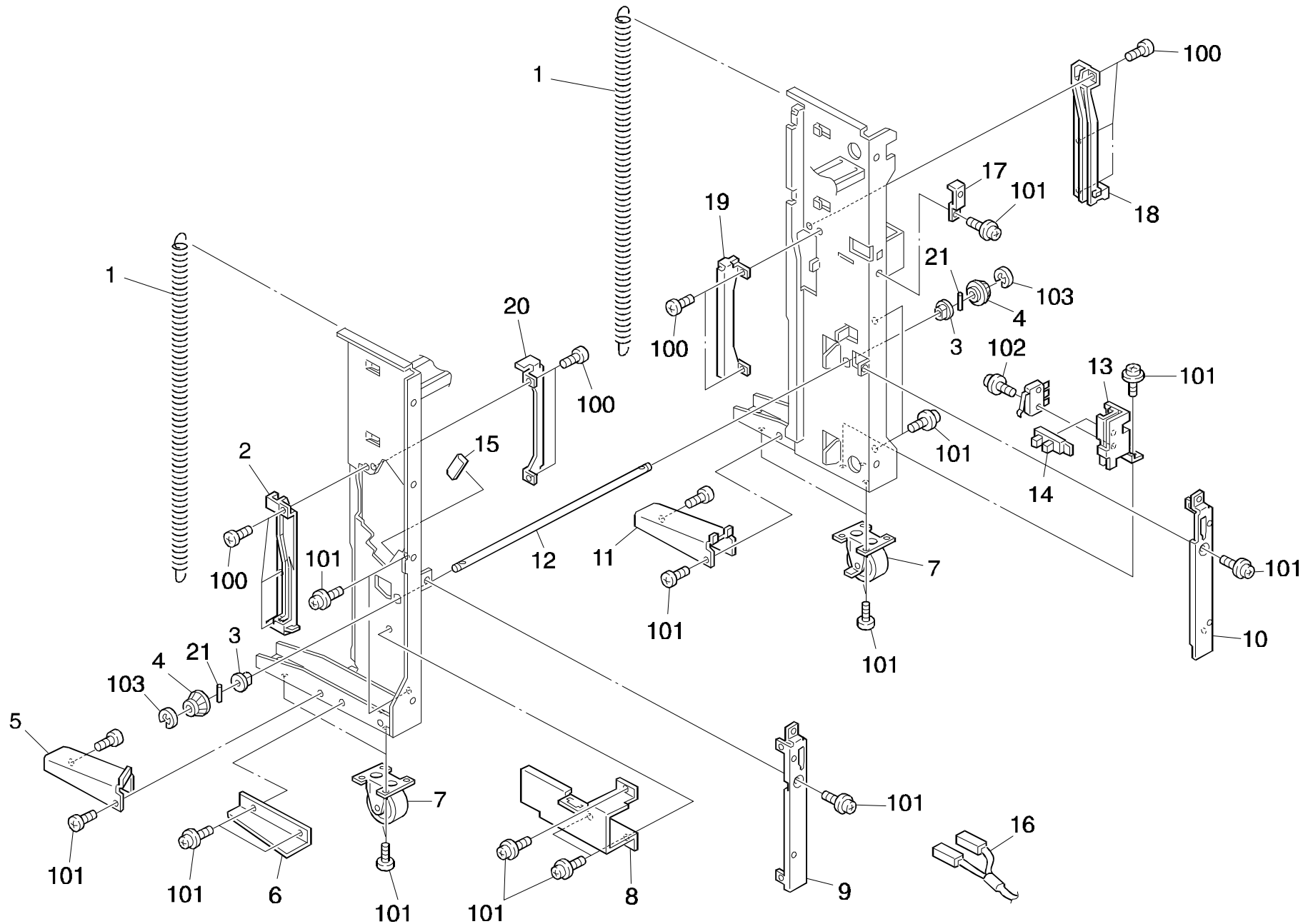


10. SORTER SECTION 1 (C560/C561)

Index No.	Part No.	Description	Q'ty Per Assembly
1	VFA3 3513	Front Upper Cam Holder	1
2	VFA3 3515	Spring Plate	1
3	VFA3 3516	Nut Plate	2
4	VFS1 1156	Bushing	4
5	VFA6 6206	Front Cam	1
6	VFA6 6213	Cam Shaft	2
7	VXF9 0369	Timing Belt	2
8	VFS2 3445	Pulley	2
9	VXG9 0249	Ball Bearing	2
10	VFS3 0835	Gear Pulley - 30T/18T	2
11	VFA5 4788	Shaft	1
12	VFA5 4774	Front Lower Cam Holder	1
13	VFA6 6232	Magnet Plate	1
14	VFA6 6208	Front Upper Guide	1
15	VFA6 6209	Front Lower Guide	1
16	VFE6 2712	Rail Cover	2
17	VFA6 6211	Rear Lower Guide	1
18	VFL6 0681	Cover Plate 1	1
19	VFL6 0687	Cover Plate 2	1
20	VFE6 2706	Solenoid Bracket	1
21	VFE6 2114	Slide Com	1
22	VFA5 4913	Release Knob	1
23	VFM9 0565	Paper Release Solenoid	1
23a	VFF2 4455	Paper Release Plate	1
23b	VFA6 6298	Microswitch Cover	1
23c	VFL9 0128	Paper Release Link	1
23d	VFF2 4178	Paper Release Solenoid	1
23e	VFK6 7509	Solenoid	1
23f	VFS3 2822	Release Paper Spring	1
24	VFA6 6224	Sensor Bracket	1
25	VWG8 0164	Photointerrupter	2
26	VFH7 1750	Sorter Drive Motor	1
27	VFA5 4876	Encoder	1
28	VFA6 6218	Rear Lower Cam Holder	1
29	VFE9 0036	Lift Guide	1

Index No.	Part No.	Description	Q'ty Per Assembly
30	VFA6 6217	Cam Sensor Actuator	1
31	VFA6 6207	Rear Cam	1
32	VFA3 3514	Rear Upper Cam Holder	1
33	VFH2 5824	Dust Cover	1
34	VFA6 6210	Rear Upper Guide	1
35	VFA3 3516	Nut Plate	1
36	VFF2 4169	Stapler Relay Harness	1
37	VFA6 6214	Sensor Bracket	1
38	V4G1 0106	Power Supply Cord	1
38a	VFM6 0661	Power Supply Cord - 230V	1
38b	VFK6 5069	Noise Filter (230V)	1
38c	VFL6 0636	Harness	1
38d	VFM6 0660	Power Supply Connector	1
38e	VFL6 0617	Grounding Harness	1
39	VFM6 0607	Door Switch	1
39a	VFA5 4800	Safety Switch Cover	1
39b	VFE6 1417	Safety Switch Plate	1
39c	VFK6 7611	Microswitch	1
39d	VFL6 1040	Safety Switch Harness	1
39e	VFA5 4992	Safety Switch Arm	1
39f	VFS1 9102	Stepped Screw - M3	1
40	VWC4 0237	Microswitch	1
41	C560 9005	Parallel Pin - 2x18	1
42	C560 9004	Parallel Pin - 2x14	4
100	0354 0060W	Philips Truus Head Screw - M4x6	
101	0951 4006W	Philips Screw With Flat Waser-M4x6	
102	0353 0080W	Tapping Screw - M3x8	
103	C561 9012	Retaining Ring - M6.4	
104	0701 0080Z	Flat Washer - M8	
105	0951 2010Z	Philips Pan Head Screw W/W - M2x10	
106	0554 0060E	Allen Screw - M4x6	

11. SORTER SECTION 2 (C560/C561)



11. SORTER SECTION 2 (C560/C561)

Index No.	Part No.	Description	Q'ty Per Assembly
1	VFS0 2077	Spring	2
2	VFA6 6219	Front Slide Rail	1
3	VRS1 1054	Bushing	2
4	VFS3 0155	Gear - 30T	2
5	VFE6 2713	Front Caster Cover	1
6	VFA6 6294	Cover	1
7	VFC1 6329	Caster	4
8	VFA6 6233	Harness Cover	1
9	VFE6 2626	Front Suppor Plate	1
10	VFE6 2627	Rear Support Plate	1
11	VFE6 2714	Rear Caster Cover	1
12	VFA5 4786	Drive Joint Shaft	1
13	VFA6 6215	Switch Bracket	1
14	VWG8 0164	Photointerrupter	4
15	VFE6 2694	Edge Cover	1
16	VFF2 4169	Stapler Relay Harness	1
17	VFE6 2661	Switch Cover Braclet	1
18	VFA6 6220	Slide Rail	1
19	VFA6 6222	Rear Support Plate	1
20	VFA6 6221	Front Support Plate	1
21	C560 9006	Parallel Pin - 2x16	2

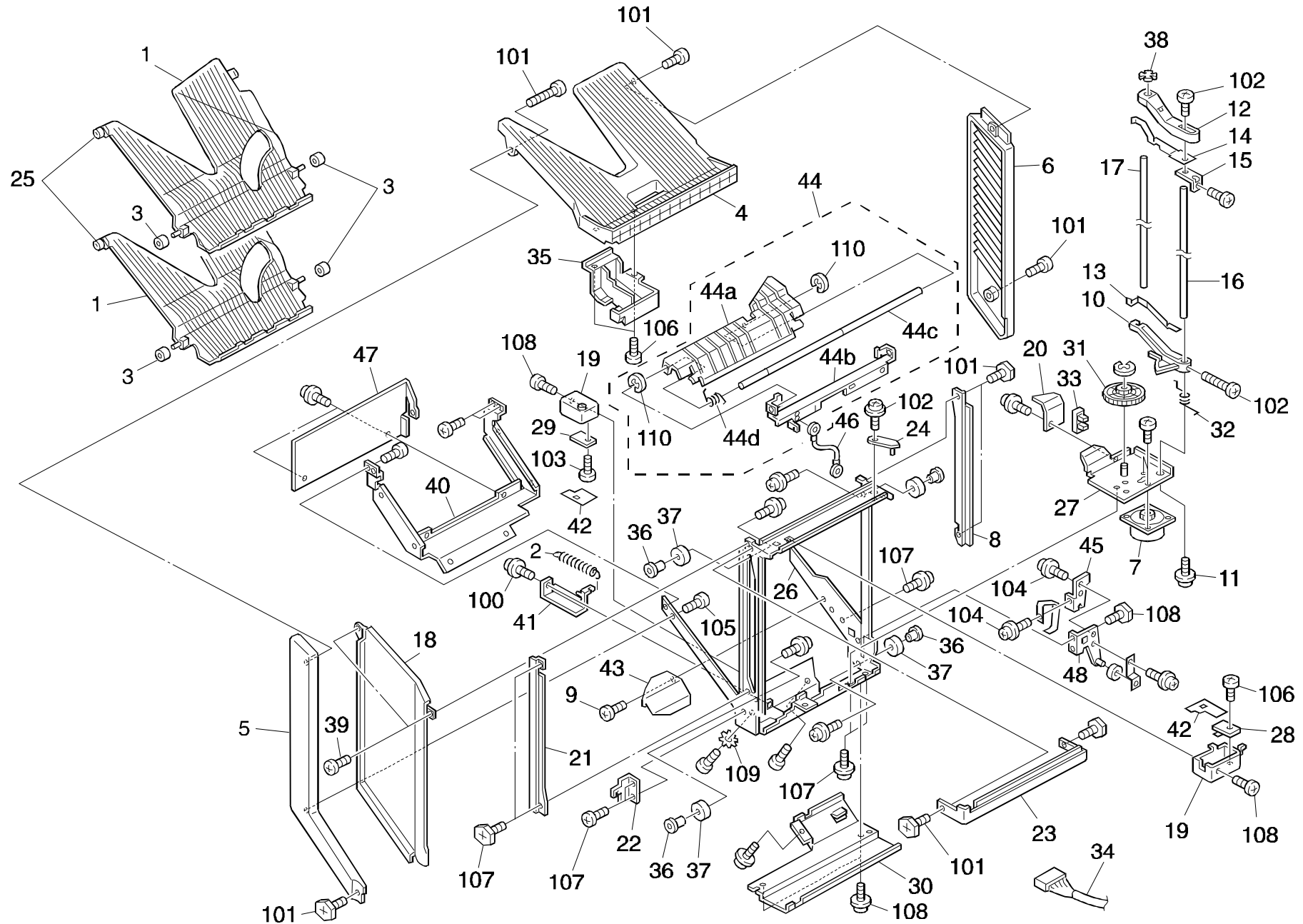
Index No.	Part No.	Description	Q'ty Per Assembly
100	0354 0060W	Philips Truus Head Screw - M4x6	
101	0951 4006W	Philips Screw With Flat Waser-M4x6	
102	0951 2010W	Philips Pan Head Screw W/W - M2x10	
103	C561 90123	Retaining Ring - M6.4	

12. SORTER SECTION 3 (C560/C561)

Index No.	Part No.	Description	Q'ty Per Assembly
1	VFA3 3513	Front Upper Cam Holder	1
2	VFA3 3515	Spring Plate	1
3	VFA3 3516	Nut Plate	2
4	VFS1 1156	Bushing	4
5	VFA6 6206	Front Cam	1
6	VFA6 6213	Cam Shaft	2
7	VXF9 0369	Timing Belt	2
8	VFS2 3445	Pulley	2
9	VXG9 0013	Ball Bearing	2
10	VFS3 0835	Gear Pulley - 30T/18T	2
11	VFA5 4788	Shaft	1
12	VFA5 4774	Front Lower Cam Holder	1
13	VFA6 6232	Magnet Plate	1
14	VFA6 6208	Front Upper Guide	1
15	VFA6 6209	Front Lower Guide	1
16	VFE6 2712	Rail Cover	2
17	VFA6 6211	Rear Lower Guide	1
18	VFE6 2674	Sorter Lower Stay	1
19	VFM6 0607	Door Switch	1
19a	VFA5 4800	Safety Switch Cover	1
19b	VFE6 1417	Safety Switch Plate	1
19c	VFK6 7611	Microswitch	1
19d	VFL6 1040	Safety Switch Harness	1
19e	VFA5 4992	Safety Switch Arm	1
19f	VFS1 9102	Stepped Screw - M3	1
20	VFE6 2706	Solenoid Bracket	1
21	VFE6 2114	Slide Com	2
22	VFA5 4913	Release Knob	1
23	VFM9 0565	Paper Release Solenoid	1
23a	VFF2 4455	Paper Release Plate	1
23b	VFA6 6298	Microswitch Cover	1
23c	VFL9 0128	Paper Release Link	1
23d	VFF2 4178	Paper Release Solenoid	1
23e	VFK6 7509	Solenoid	1
23f	VFS3 2822	Release Paper Spring	1

Index No.	Part No.	Description	Q'ty Per Assembly
24	VFA6 6224	Sensor Bracket	1
25	VWG8 0164	Photointerrupter	2
26	VFH7 1750	Sorter Drive Motor	1
27	VFA5 4876	Encoder	2
28	VFA6 6218	Rear Lower Cam Holder	1
29	VFA5 4794	Guide Plate	1
30	VFA6 6217	Cam Sensor Actuator	1
31	VFA6 6207	Rear Cam	1
32	VFA3 3514	Rear Upper Cam Holder	1
33	VFH2 5824	Dust Cover	1
34	VFA6 6210	Rear Upper Guide	1
35	VFA3 3516	Nut Plate	1
36	VFF2 4169	Stapler Relay Harness	1
37	VFA6 6214	Sensor Bracket	1
38	C560 9005	Parallel Pin - 2x18	2
39	VWC4 0237	Microswitch	1
40	C560 9004	Parallel Pin - 2x14	4
100	0354 0060W	Philips Truus Head Screw - M4x6	
101	0951 4006W	Philips Screw With Flat Waser-M4x6	
102	0353 0080W	Tapping Screw - M3x8	
103	C561 9012	Retaining Ring - M6.4	
104	0701 0080Z	Flat Washer - M8	
105	0951 2010W	Philips Pan Head Screw W/W - M2x10	
106	0554 0060E	Allen Screw - M4x6	

13. SORTER BIN SECTION (C560/C561)

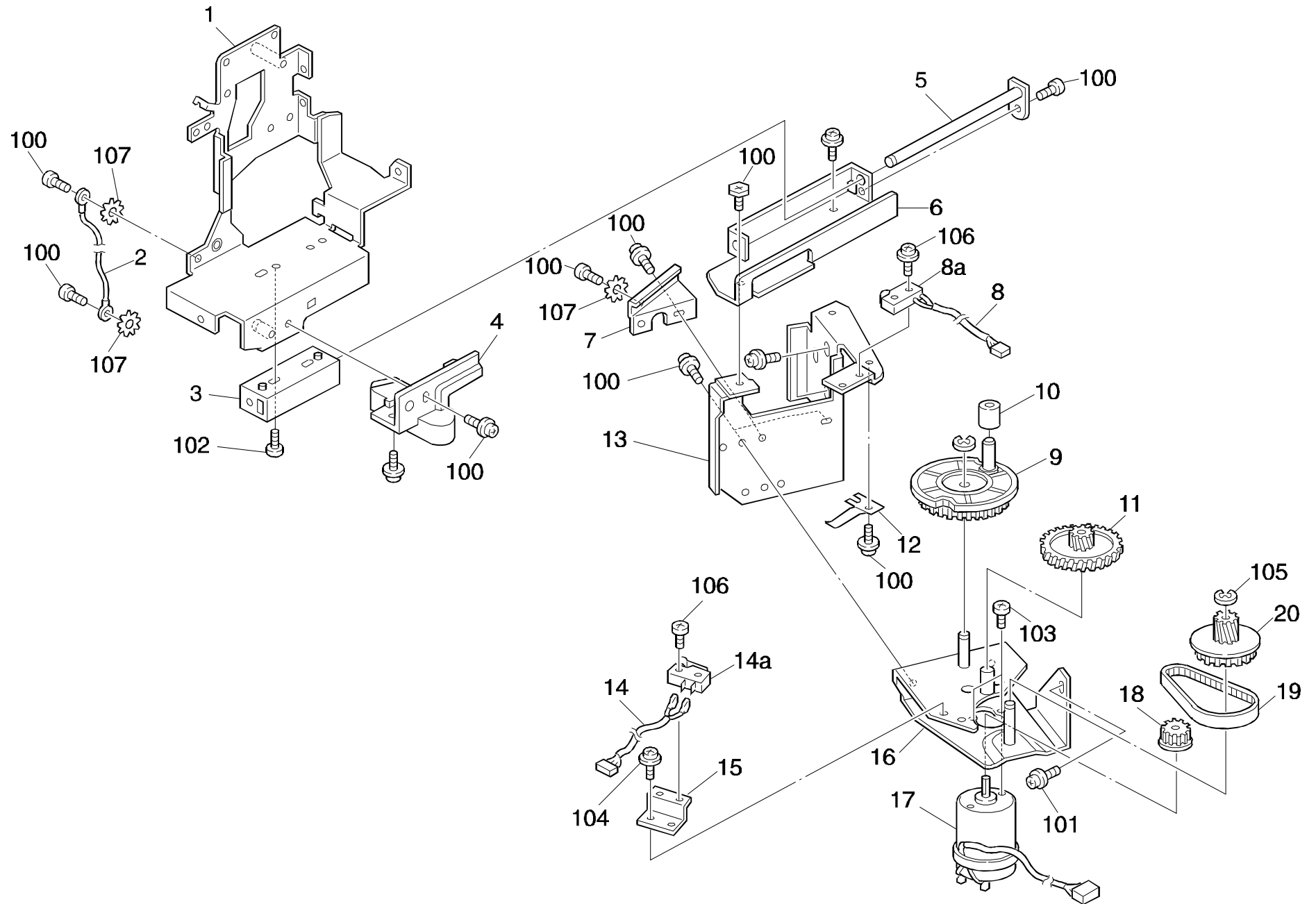


13. SORTER BIN SECTION (C560/C561)

Index No.	Part No.	Description	Q'ty Per Assembly
1	VFL6 0699	Sorter Bin	2
2	VFS3 2184	Lever Spring	1
3	VFA6 6285	Bin Roller	4
4	VFA6 6282	Top Tray	1
5	VFA6 6283	Front Bin Slider	1
6	VFA6 6284	Rear Bin Slider	1
7	VFK6 7129	Stepping Motor	1
8	VFA6 6271	Bin Support Frame	1
9	VFA4 6702	Hexagonal Headless Set Screw	1
10	VFA5 4951	Rear Paper Guide Arm	1
11	VFA5 4952	Guide Plate Screw	1
12	VFA6 6273	Upper Paper Guide Arm	1
13	VFA5 4954	Spring Plate	1
14	VFA6 6274	Spring Plate	1
15	VFA5 4956	Arm Bracket	1
16	VFA6 6275	Guide Shaft	1
17	VFA6 6276	Guide Shaft	1
18	VFA6 0505	Plate	1
19	VFA6 6288	Sensor Bracket 1	2
20	VFA5 4962	Sensor Bracket 2	1
21	VFA6 6272	Cable Cover	1
22	VFA5 4964	Front Spring Hook	1
23	VFA6 6277	Spacer	1
24	VFA5 4967	Arm	1
25	VFA5 4969	Nylon Ring	2
26	VFE6 2695	Bin Frame	1
27	VFF2 1162	Bottom Plate	1
28	VFG1 5473	LED Sensor	1
29	VFG1 5474	Photo Transister	1
30	VFE6 2671	Bin Rear Cover	1
31	VFS3 0836	Gear - 100T/21T	1
32	VFS3 2132	Spring	1
33	VWG8 0164	Photointerrupter	1
34	VFM6 0659	Sensor Harness	1
35	VFA6 6287	Bin Inner Cover	1

Index No.	Part No.	Description	Q'ty Per Assembly
36	VFE9 0115	Fixed Shaft	1
37	VFE9 0112	Fixed Roller	3
38	VFA5 4970	Arm Cover	1
39	VFA4 6702	Hexagonal Headless Set Screw	1
40	VFE6 2705	Bin Stay	1
41	VFE6 2668	Spring Stay	1
42	VFA6 6290	Mylar Cover	1
43	VFE6 2663	Bin Gear Cover	1
44	VFM6 0697	Bin Entrance Guide Ass'y	1
44 a	VFL6 0683	Dammy Bin	1
44 b	VFE6 2665	Hinge Plate	1
44 c	VFE6 2689	Bin Shaft	1
44 d	VFS0 2075	Guide Spring	1
45	VFM9 0405	Rear Spring Hook	1
45	VFA6 6216	Guide Pin	1
46	VFF2 4176	Grownding Wire	1
47	VFE6 2669	Swing Cover	1
100	0951 4006W	Philips Screw With Flat Waser-M4x6	
101	0354 0060D	Sunk Screw - 4x6	
102	0353 0060W	Philips Pan Head Screw - M3x6	
103	0434 0060W	Tapping Screw - M4x6	
104	0951 3006W	Philips Screw With Flat Waser-M3x6	
105	0354 0060W	Philips Truus Head Screw - M4x6	
106	0434 0080W	Tapping Screw - M4x8	
107	0951 4004W	Philips Screw With Flat Waser-M4x4	
108	0951 4006W	Philips Screw With Flat Waser-M4x6	
109	0705 0040B	Toothed Washer	
110	0720 0050Z	Retaining Ring - M5	

14. STAPLE UNIT 1 (C560/C561)

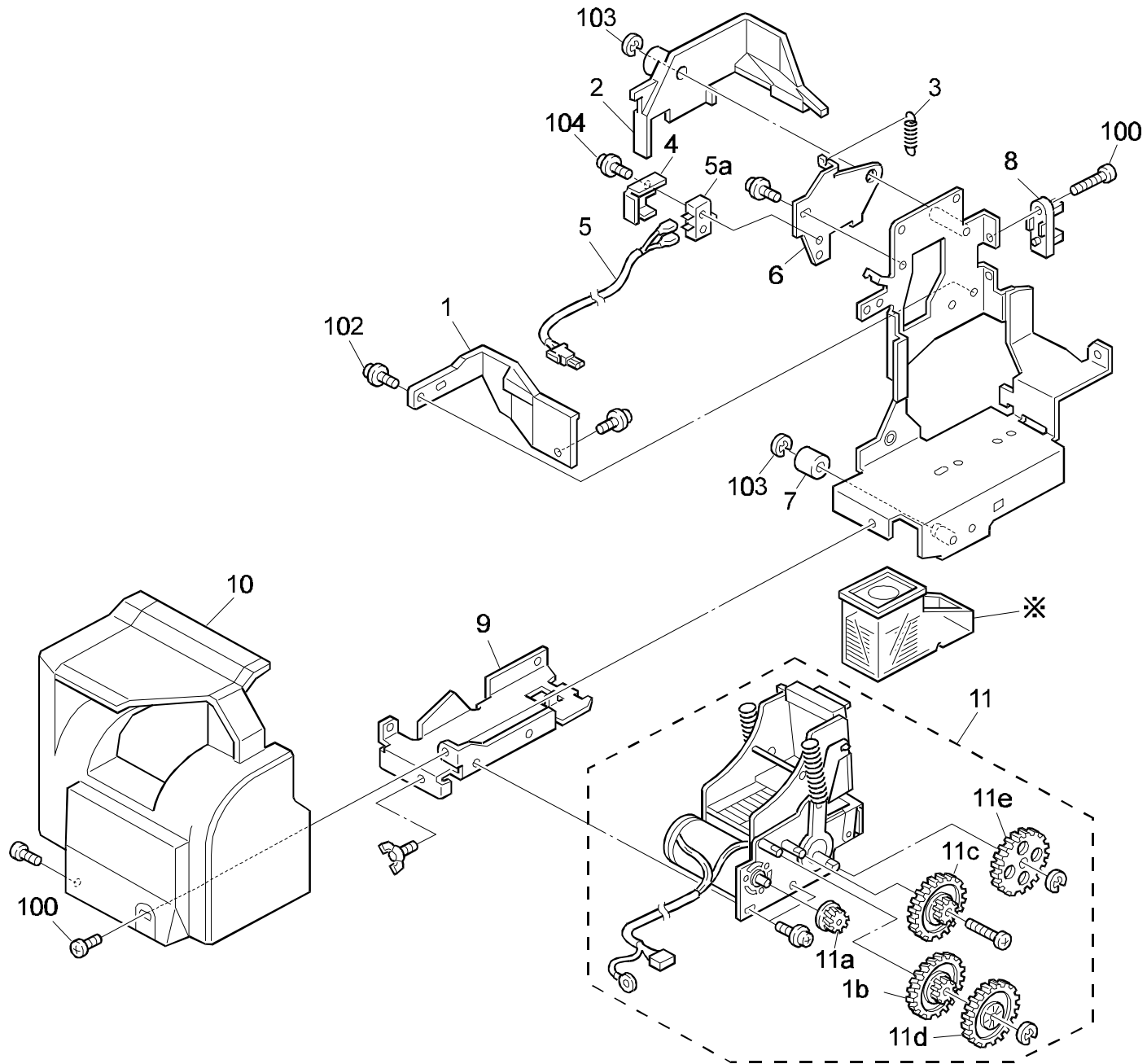


14. STAPLE UNIT 1 (C560/C561)

Index No.	Part No.	Description	Q'ty Per Assembly
1	VFF2 4456	Staple Frame	2
2	VFF2 4174	Grounding Wire	1
3	VFA6 6314	Slider Guide	1
4	VFA6 6308	Slider	1
5	VFF2 4458	Slide Shaft	1
6	VFA6 6302	Frame Guide Rail	1
7	VFA6 6317	Gear Cover	1
8	VFF2 4171	Staple Harness	1
8	VWC4 5014	Microswitch	1
9	VFA6 6310	Ring Gear - 64Z	1
10	VFA6 6311	Slide Roller	1
11	VFS3 0834	Gear - 18T/56T	1
12	VFA6 6296	Spring Plate	1
13	VFA6 6301	Stapler Mount Plate	1
14	VFF2 4172	Staple Position Harness	1
14a	VWC4 0246	Microswitch	1
15	VFA6 6309	Switch Bracket	1
16	VFF2 4457	Drive Unit Bracket	1
17	VFH7 1751	DC Motor	1
18	VFS2 3365	Pulley - 16T	1
19	VXF9 0217	Timing Belt - 63T	1
20	VFS3 0833	Gear - 18T/48T	1

Index No.	Part No.	Description	Q'ty Per Assembly
100	0354 0060W	Philips Truus Head Screw - M4x6	
101	0951 4006W	Philips Screw With Flat Waser-M4x6	
102	0353 0060W	Philips Pan Head Screw - M3x6	
103	0312 6030W	Philips Pan Head Screw - M2.6x3	
104	0951 3006W	Philips Screw With Flat Waser-M3x6	
105	0720 0050Z	Retaining Ring - M5	
106	0951 2008W	Philips Pan Head Screw W/W - M2x18	

15. STAPLE UNIT 2 (C560/C561)



15. STAPLE UNIT 2 (C560/C561)

Index No.	Part No.	Description	Q'ty Per Assembly
*		Stapler Type C	
1	VFA6 6307	Under Guide	1
2	VFA6 6306	Shutter Arm	1
3	VFS3 2823	Spring	1
4	VFA6 6318	Microswitch Cover	1
5	VFF2 4177	Safety Switch Harness	1
5a	VWC4 0246	Microswitch	1
6	VFA6 6305	Swing Plate	1
7	VFA6 6315	Roller	1
8	VFH7 7238	Photointerruptor	1
9	VFA6 6300	Stapler Bracket	1
10	VFL6 0685	Staple Cover	1
11	VFA6 6295	Staple Unit	1
11a	VFS3 0895	Gear - 12T	1
11b	VFS3 0896	Gear - 18T/53T	1
11c	VFS3 0897	Gear - 18T/53T	1
11d	VFS3 0898	Gear - 53T	1
11e	VFS3 0899	Gear - 53T	1

Index No.	Part No.	Description	Q'ty Per Assembly
100	0353 0060D	Sunk Screw - 3x6	
101	0354 0060D	Sunk Screw - 4x6	
102	0951 3006W	Philips Screw With Flat Waser-M3x6	
103	C560 9011	Retaining Ring - M3.7	
104	0951 2008W	Philips Pan Head Screw W/W - M2x18	

PARTS INDEX

Part No.	Description	Page and Index No.
C207 6132	Support End Fence	11- 14
C209 3141	Stopper - Scanner Unit	11- 13
C209 6142	Guide Fence Slider	11- 8
C209 6143	Guide Fence Knob	11- 9
C209 6144	Guide Fence Shaft	11- 10
C209 6145	Guide Fence Bracket	11- 11
C209 6149	Guide Fence Spring	11- 12
C560 9001	Bearing	7- 12
C560 9002	Screw - M4x55	5- 20
C560 9002	Screw - M4x55	15- 27
C560 9003	Bearing - M14	5- 21
C560 9003	Bearing - M14	15- 28
C560 9004	Parallel Pin - 2x14	21- 42
C560 9004	Parallel Pin - 2x14	25- 40
C560 9005	Parallel Pin - 2x18	21- 41
C560 9005	Parallel Pin - 2x18	25- 38
C560 9006	Parallel Pin - 2x16	23- 21
C560 9007	Parallel Pin - 3x12	5- 23
C560 9007	Parallel Pin - 3x12	15- 31
C560 9008	Parallel Pin - 2x8	5- 24
C560 9008	Parallel Pin - 2x8	15- 32
C560 9009	Retaining Ring - M2.4	5-103
C560 9009	Retaining Ring - M2.4	15-103
C560 9010	Retaining Ring - M3.2	5-104
C560 9010	Retaining Ring - M3.2	15-104
C560 9011	Retaining Ring - M3.7	31-103
C560 9012	Retaining Ring - M6.4	7-106
C560 9612	Retaining Ring - M6.4	19-103
C561 9012	Retaining Ring - M6.4	17-103
C561 9012	Retaining Ring - M6.4	21-103
C561 9012	Retaining Ring - M6.4	25-103
C561 90123	Retaining Ring - M6.4	23-103
V4F1 0171	Front Cover	11- 22
V4F1 0171	Front Cover	17- 6
V4F1 0171	Front Cover	19- 6

Part No.	Description	Page and Index No.
V4G1 0106	Power Supply Cord	21- 38
VFA2 6523	Brake Plate	7- 17
VFA3 3513	Front Upper Cam Holder	21- 1
VFA3 3513	Front Upper Cam Holder	25- 1
VFA3 3514	Rear Upper Cam Holder	21- 32
VFA3 3514	Rear Upper Cam Holder	25- 32
VFA3 3515	Spring Plate	21- 2
VFA3 3515	Spring Plate	25- 2
VFA3 3516	Nut Plate	21- 3
VFA3 3516	Nut Plate	21- 35
VFA3 3516	Nut Plate	25- 3
VFA3 3516	Nut Plate	25- 35
VFA4 6702	Hexagonal Headless Set Screw	19- 18
VFA4 6702	Hexagonal Headless Set Screw	27- 9
VFA4 6702	Hexagonal Headless Set Screw	27- 39
VFA5 4774	Front Lower Cam Holder	21- 12
VFA5 4774	Front Lower Cam Holder	25- 12
VFA5 4786	Drive Joint Shaft	23- 12
VFA5 4788	Shaft	21- 11
VFA5 4788	Shaft	25- 11
VFA5 4794	Guide Plate	25- 29
VFA5 4800	Safety Switch Cover	21- 39
VFA5 4800	Safety Switch Cover	25- 19
VFA5 4823	Door Hinge	17- 12
VFA5 4823	Door Hinge	19- 12
VFA5 4876	Encoder	5- 19
VFA5 4876	Encoder	15- 26
VFA5 4876	Encoder	21- 27
VFA5 4876	Encoder	25- 27
VFA5 4913	Release Knob	21- 22
VFA5 4913	Release Knob	25- 22
VFA5 4951	Rear Paper Guide Arm	27- 10
VFA5 4952	Guide Plate Screw	27- 11
VFA5 4954	Spring Plate	27- 13
VFA5 4956	Arm Bracket	27- 15

Part No.	Description	Page and Index No.
VFA5 4962	Sensor Bracket 2	27- 20
VFA5 4964	Front Spring Hook	27- 22
VFA5 4967	Arm	27- 24
VFA5 4969	Nylon Ring	27- 25
VFA5 4970	Arm Cover	27- 38
VFA5 4992	Safety Switch Arm	21- 30
VFA5 4992	Safety Switch Arm	25- 19
VFA6 0505	Plate	27- 18
VFA6 1023	Adjusting Pin	3- 13
VFA6 1023	Adjusting Pin	13- 12
VFA6 6206	Front Cam	21- 5
VFA6 6206	Front Cam	25- 5
VFA6 6207	Rear Cam	21- 31
VFA6 6207	Rear Cam	25- 31
VFA6 6208	Front Upper Guide	21- 14
VFA6 6208	Front Upper Guide	25- 14
VFA6 6209	Front Lower Guide	21- 15
VFA6 6209	Front Lower Guide	25- 15
VFA6 6210	Rear Upper Guide	21- 34
VFA6 6210	Rear Upper Guide	25- 34
VFA6 6211	Rear Lower Guide	21- 17
VFA6 6211	Rear Lower Guide	25- 17
VFA6 6212	Staple Botton	17- 9
VFA6 6212	Staple Botton	19- 9
VFA6 6213	Cam Shaft	21- 6
VFA6 6213	Cam Shaft	25- 6
VFA6 6214	Sensor Bracket	21- 37
VFA6 6214	Sensor Bracket	25- 37
VFA6 6215	Switch Bracket	23- 13
VFA6 6216	Guide Pin	27- 45
VFA6 6217	Cam Sensor Actuator	21- 30
VFA6 6217	Cam Sensor Actuator	25- 30
VFA6 6218	Rear Lower Cam Holder	21- 28
VFA6 6218	Rear Lower Cam Holder	25- 28
VFA6 6219	Front Slide Rail	23- 2

Part No.	Description	Page and Index No.
VFA6 6220	Slide Rail	23- 18
VFA6 6221	Front Support Plate	23- 20
VFA6 6222	Rear Support Plate	23- 19
VFA6 6224	Sensor Bracket	21- 24
VFA6 6224	Sensor Bracket	25- 24
VFA6 6229	Magnet Holder	17- 10
VFA6 6229	Magnet Holder	19- 10
VFA6 6232	Magnet Plate	21- 13
VFA6 6232	Magnet Plate	25- 13
VFA6 6233	Harness Cover	23- 8
VFA6 6247	Staple Inner Cover	17- 5
VFA6 6247	Staple Inner Cover	19- 5
VFA6 6271	Bin Support Frame	27- 8
VFA6 6272	Cable Cover	27- 21
VFA6 6273	Upper Paper Guide Arm	27- 12
VFA6 6274	Spring Plate	27- 14
VFA6 6275	Guide Shaft	27- 16
VFA6 6276	Guide Shaft	27- 17
VFA6 6277	Spacer	27- 23
VFA6 6282	Top Tray	27- 4
VFA6 6283	Front Bin Slider	27- 5
VFA6 6284	Rear Bin Slider	27- 6
VFA6 6285	Bin Roller	27- 3
VFA6 6287	Bin Inner Cover	27- 35
VFA6 6288	Sensor Bracket 1	27- 19
VFA6 6290	Mylar Cover	27- 42
VFA6 6294	Cover	23- 6
VFA6 6295	Staple Unit	31- 11
VFA6 6296	Spring Plate	29- 12
VFA6 6298	Microswitch Cover	21- 23
VFA6 6298	Microswitch Cover	25- 23
VFA6 6300	Stapler Bracket	31- 9
VFA6 6301	Stapler Mount Plate	29- 13
VFA6 6302	Frame Guide Rail	29- 6
VFA6 6305	Swing Plate	31- 6

Part No.	Description	Page and Index No.
VFA6 6306	Shutter Arm	31- 2
VFA6 6307	Under Guide	31- 1
VFA6 6308	Slider	29- 4
VFA6 6309	Switch Bracket	29- 15
VFA6 6310	Ring Gear - 64Z	29- 9
VFA6 6311	Slide Roller	29- 10
VFA6 6314	Slider Guide	29- 3
VFA6 6315	Roller	31- 7
VFA6 6317	Gear Cover	29- 7
VFA6 6318	Microswitch Cover	31- 4
VFA6 6416	Front Joint Stay	13- 9
VFA6 6417	Rear Joint Stay	13- 10
VFC1 6329	Caster	23- 7
VFC1 9613	Upper Joint Stay	13- 11
VFE6 1417	Safety Switch Plate	21- 3 b
VFE6 1417	Safety Switch Plate	25- 1 b
VFE6 2114	Slide Com	21- 21
VFE6 2114	Slide Com	25- 21
VFE6 2626	Front Suppor Plate	23- 9
VFE6 2627	Rear Support Plate	23- 10
VFE6 2628	Front Side Plate	7- 7
VFE6 2629	Rear Side Plate	7- 20
VFE6 2630	Front Side Plate - Tray	7- 1
VFE6 2631	Rear Side Plate - Tray	7- 3
VFE6 2633	Middle Stay	7- 22
VFE6 2634	Lift Motor Bracket	7- 1 b
VFE6 2636	Slide Core	7- 4
VFE6 2636	Slide Core	13- 8
VFE6 2637	Front Chain Holder	7- 5
VFE6 2638	Rear Chain Holder	9- 10
VFE6 2639	Sensor Bracket	9- 11
VFE6 2640	Limit Sensor Bracket	9- 7
VFE6 2642	Sprocket Shaft	7- 8
VFE6 2643	Sensor Actuator	9- 8
VFE6 2644	Adaptor	7- 1 c

Part No.	Description	Page and Index No
VFE6 2645	Clutch	7- 1 a
VFE6 2646	Gear - 54	7- 1 a
VFE6 2647	Paper Tray Stopper	3- 14
VFE6 2648	Middle Fan Cover	7- 14
VFE6 2649	Sensor Cover	9- 13
VFE6 2650	Support Stay	7- 21
VFE6 2651	Front Cover	3- 3
VFE6 2652	Rear Cover	3- 4
VFE6 2653	Lower Right Cover	7- 13
VFE6 2654	Rear Stay	3- 5
VFE6 2655	Joint Plate	3- 6
VFE6 2656	Joint Cover	3- 7
VFE6 2657	Support Plate	3- 8
VFE6 2658	Back Plate	3- 9
VFE6 2659	Stay Bracket	3- 10
VFE6 2661	Switch Cover Braclet	23- 17
VFE6 2663	Bin Gear Cover	27- 43
VFE6 2665	Hinge Plate	27- 4 b
VFE6 2666	Stay Front Cover	3- 11
VFE6 2668	Spring Stay	27- 41
VFE6 2669	Swing Cover	27- 47
VFE6 2670	Stay Rear Cover	3- 12
VFE6 2671	Bin Rear Cover	27- 30
VFE6 2672	Safety Cover	7- 19
VFE6 2673	Hold Tape	13- 2
VFE6 2674	Sorter Lower Stay	25- 18
VFE6 2675	Paper Guide	19- 20
VFE6 2676	Lower Right Cover	19- 19
VFE6 2677	Belt Drive Shaft	5- 1
VFE6 2677	Belt Drive Shaft	15- 1
VFE6 2678	Belt Driven Shaft	15- 2
VFE6 2679	Transfer Belt - 1	15- 4
VFE6 2680	Transfer Belt - 2	15- 5
VFE6 2681	Drive Gear Shaft	5- 1 a
VFE6 2681	Drive Gear Shaft	15- 2 a

Part No.	Description	Page and Index No.
VFE6 2682	Transfer Shaft	5- 12
VFE6 2682	Transfer Shaft	15- 16
VFE6 2683	Tension Spring	15- 17
VFE6 2684	Tension Spring	15- 18
VFE6 2685	Timing Belt - 240	5- 19
VFE6 2685	Timing Belt - 240	15- 26
VFE6 2686	Belt Driven Shaft	5- 8
VFE6 2687	Transfer Belt	5- 2
VFE6 2689	Bin Shaft	27- 44
VFE6 2690	Transfer Shaft	15- 10
VFE6 2691	Transfer Shaft Holder	15- 11
VFE6 2694	Edge Cover	23- 15
VFE6 2695	Bin Frame	27- 26
VFE6 2696	Belt Driven Shaft	15- 3
VFE6 2697	Middle Support Plate	5- 3
VFE6 2697	Middle Support Plate	15- 6
VFE6 2698	Support Plate	5- 4
VFE6 2698	Support Plate	15- 7
VFE6 2699	Buccume Fan Box	5- 5
VFE6 2700	Buccume Fan Box	15- 8
VFE6 2701	Joint Stay	13- 3
VFE6 2702	Transfer Motor Bracket	5- 19
VFE6 2702	Transfer Motor Bracket	15- 26
VFE6 2703	Sensor Bracket	5- 19
VFE6 2703	Sensor Bracket	15- 26
VFE6 2704	Left Cover	17- 14
VFE6 2704	Left Cover	19- 14
VFE6 2705	Bin Stay	27- 40
VFE6 2706	Solenoid Bracket	21- 20
VFE6 2706	Solenoid Bracket	25- 20
VFE6 2707	Tray Lower Cover	11- 5
VFE6 2708	Jumper Plate	5- 6
VFE6 2709	Jumper Shaft	5- 7
VFE6 2710	Side Fence	11- 4
VFE6 2712	Rail Cover	21- 16

Part No.	Description	Page and Index No.
VFE6 2712	Rail Cover	25- 16
VFE6 2713	Front Caster Cover	23- 5
VFE6 2714	Rear Caster Cover	23- 11
VFE6 2715	Rear Panel Cover	17- 7
VFE6 2719	Upper Left Cover	17- 2
VFE6 2719	Upper Left Cover	19- 2
VFE6 2720	Upper Cover	19- 9
VFE6 2721	Copy Tray	11- 1
VFE6 2722	Sub Tray	11- 2
VFE6 2723	End Fence Rail	11- 3
VFE6 2724	Staple End Fence	11- 17
VFE6 2725	Staple Cover	11- 17
VFE6 2726	Upper Right Cover	17- 3
VFE6 2726	Upper Right Cover	19- 3
VFE6 2727	Transfer Cover	15- 12
VFE6 2728	Joint Frint Cover	13- 4
VFE6 2729	Joint Rear Cover	13- 5
VFE6 2730	Stapler Stay	19- 16
VFE6 2732	Spring Plate Holder	9- 1
VFE6 2733	Sensor Spring	9- 2
VFE6 2734	Joint Cover	19- 13
VFE6 2736	End Fence Spring	11- 17
VFE6 2737	Right Cover	15- 13
VFE6 2738	Middle Right Guide	5- 9
VFE6 2739	Middle Left Guide	5- 10
VFE6 2740	Left Cover	15- 14
VFE6 2741	Antistatic Brush	5- 11
VFE6 2741	Antistatic Brush	15- 15
VFE6 2742	Roller Chain 25	7- 11
VFE6 2743	Grip	11- 7
VFE6 2748	Joint Bottom Cover	13- 7
VFE6 2753	Rear Left Cover	19- 8
VFE6 2758	Tray Spring	11- 15
VFE6 2780	Relay Duct	5- 25
VFE6 2781	Duct	15- 33

Part No.	Description	Page and Index No.
VFE6 2782	Duct Fin	5- 26
VFE6 2782	Duct Fin	15- 34
VFE6 2789	Front Upper Guide	11- 25
VFE6 2790	Rear Upper Guide	11- 26
VFE9 0036	Lift Guide	21- 29
VFE9 0112	Fixed Roller	27- 37
VFE9 0115	Fixed Shaft	27- 36
VFF2 1162	Bottom Plate	27- 27
VFF2 4169	Stapler Relay Harness	21- 36
VFF2 4169	Stapler Relay Harness	23- 16
VFF2 4169	Stapler Relay Harness	25- 36
VFF2 4171	Staple Harness	29- 8
VFF2 4172	Staple Position Harness	29- 14
VFF2 4174	Grounding Wire	29- 2
VFF2 4176	Grounding Wire	27- 46
VFF2 4177	Safety Switch Harness	31- 5
VFF2 4178	Paper Release Solenoid	21- 23d
VFF2 4178	Paper Release Solenoid	25- 23d
VFF2 4455	Paper Release Plate	21- 23a
VFF2 4455	Paper Release Plate	25- 23a
VFF2 4456	Staple Frame	29- 1
VFF2 4457	Drive Unit Bracket	29- 16
VFF2 4458	Slide Shaft	29- 5
VFG1 5473	LED Sensor	27- 28
VFG1 5474	Photo Transister	27- 29
VFG1 8404	Operation Panel Ass'y	17- 9c
VFG1 8404	Operation Panel Ass'y	19- 9c
VFH2 5824	Dust Cover	21- 33
VFH2 5824	Dust Cover	25- 33
VFH7 1750	Sorter Drive Motor	21- 26
VFH7 1750	Sorter Drive Motor	25- 26
VFH7 1751	DC Motor	29- 17
VFH7 7023	Photointerrupter	17- 14b
VFH7 7023	Photointerrupter	19- 14b
VFH7 7238	Photointerrupter	31- 8

Part No.	Description	Page and Index No.
VFK6 3209	Power Supply Unit	17- 13
VFK6 3210	Power Supplu Unit - 230V	17- 13
VFK6 5069	Noise Filter (230V)	21- 3a
VFK6 7127	Vaccum Fan Motor	5- 17
VFK6 7127	Vaccum Fan Motor	15- 24
VFK6 7128	Transfer Motor	5- 19
VFK6 7128	Transfer Motor	15- 26
VFK6 7129	Stepping Motor	27- 7
VFK6 7509	Solenoid	21- 23b
VFK6 7509	Solenoid	25- 23b
VFK6 7611	Microswitch	9- 6
VFK6 7611	Microswitch	21- 39c
VFK6 7611	Microswitch	25- 19c
VFK6 7620	Microswitch	9- 5
VFK6 7835	Photointerruptor	5- 18
VFK6 7835	Photointerruptor	15- 25
VFL6 0617	Grounding Harness	21- 38b
VFL6 0636	Harness	21- 38c
VFL6 0678	Lift Motor	7- 17a
VFL6 0680	Rear Right Cover	17- 8
VFL6 0681	Cover Plate 1	21- 18
VFL6 0683	Dummy Bin	27- 44a
VFL6 0685	Staple Cover	31- 10
VFL6 0686	Side Fence Guide Rail	11- 16
VFL6 0687	Cover Plate 2	21- 19a
VFL6 0688	Brake Solenoid	7- 16a
VFL6 0689	Staple Door	17- 1
VFL6 0689	Staple Door	19- 1
VFL6 0691	Lift Motor Stay	7- 18
VFL6 0693	Upper Cover	17- 9a
VFL6 0694	Joint Stay Cover	13- 6
VFL6 0695	Rear Left Cover	17- 7
VFL6 0696	Rear Right Cover	19- 7
VFL6 0699	Sorter Bin	27- 1
VFL6 1040	Safety Switch Harness	21- 39d

Part No.	Description	Page and Index No.
VFL6 1040	Safety Switch Harness	25- 19
VFL9 0128	Paper Release Link	21- 23
VFL9 0128	Paper Release Link	25- 23
VFM6 0607	Door Switch	21- 39
VFM6 0607	Door Switch	25- 19
VFM6 0653	Transfer Harness	15- 30
VFM6 0654	DC Harness B	17- 17
VFM6 0654	DC Harness B	19- 17
VFM6 0655	Sensor Relay Harness	5- 22
VFM6 0655	Sensor Relay Harness	15- 29
VFM6 0656	Sensor Harness	17- 14
VFM6 0656	Sensor Harness	19- 14
VFM6 0657	IPC Harness	3- 15
VFM6 0658	Sensor Harness	9- 14
VFM6 0659	Sensor Harness	27- 34
VFM6 0660	Power Supply Connector	21- 38
VFM6 0661	Power Supply Cord - 230V	21- 38
VFM6 0662	DC Control Board A	17- 15
VFM6 0662	DC Control Board A	19- 15
VFM6 0663	Sorter Interface Board	3- 17
VFM6 0664	DC Harness A	17- 16
VFM6 0683	Upper Cover Ass'y	19- 9
VFM6 0686	Transfer Unit	3- 2
VFM6 0687	Transfer Moter Ass'y	5- 19
VFM6 0687	Transfer Moter Ass'y	15- 26
VFM6 0689	Lift Unit	3- 1
VFM6 0690	Lift Motor Ass'y	7- 17
VFM6 0691	Brake	7- 16
VFM6 0692	Lift Drive Shaft Ass'y	7- 15
VFM6 0693	Copy Tray Ass'y	7- 10
VFM6 0694	Staple Cover Ass'y	11- 17
VFM6 0696	Transfer Unit Ass'y	13- 1
VFM6 0697	Bin Entrance Guide Ass'y	27- 44
VFM6 0703	Left Cover Ass'y	17- 14
VFM6 0703	Left Cover Ass'y	19- 14

Part No.	Description	Page and Index No.
VFM6 0709	Stapler Frame	17- 4
VFM6 0709	Stapler Frame	19- 4
VFM6 0710	Upper Cover Ass'y	17- 9
VFM9 0405	Rear Spring Hook	27- 45
VFM9 0565	Paper Release Solenoid	21- 23
VFM9 0565	Paper Release Solenoid	25- 23
VFS0 0107	Bevel Gear	5- 19
VFS0 0107	Bevel Gear	15- 26
VFS0 2074	Cover Spring	11- 6
VFS0 2075	Guide Spring	27- 44
VFS0 2076	Clutch Spring	7- 15
VFS0 2077	Spring	23- 1
VFS0 2079	Jumper Spring	5- 13
VFS0 2080	End Spring	11- 23
VFS0 3121	Pulley - 20Z	5- 19
VFS0 3121	Pulley - 20Z	15- 26
VFS0 3122	Pulley - 30Z	5- 14
VFS0 3122	Pulley - 30Z	15- 9
VFS0 9026	Buttfley Nut	3- 16
VFS1 1156	Bushing	21- 4
VFS1 1156	Bushing	25- 4
VFS1 1190	Bushing	5- 19
VFS1 1190	Bushing	15- 26
VFS1 1213	Bushing - 6mm	5- 19
VFS1 1213	Bushing - 6mm	15- 26
VFS1 3067	Sprocket	7- 9
VFS1 9010	Stepped Screw - M2.2	11- 21
VFS1 9073	Stepped Screw - 8.2	11- 17
VFS1 9073	Stepped Screw - 8.2	15- 22
VFS1 9076	Stepped Screw - M1.9	7- 2
VFS1 9076	Stepped Screw - M1.9	11- 17
VFS1 9076	Stepped Screw - M1.9	11- 20
VFS1 9102	Stepped Screw - M3	21- 39
VFS1 9102	Stepped Screw - M3	25- 19
VFS1 9166	Stepped Screw - M4	11- 24

Part No.	Description	Page and Index No.
VFS2 3365	Pulley - 16T	29- 18
VFS2 3445	Pulley	21- 8
VFS2 3445	Pulley	25- 8
VFS2 6304	Roller - 20	11- 17d
VFS2 6304	Roller - 20	15- 21
VFS2 6305	Exit Roller	5- 15
VFS2 6305	Exit Roller	15- 19
VFS2 9394	Stepped Screw - M1.4	9- 3
VFS2 9394	Stepped Screw - M1.4	11- 18
VFS2 9461	Stepped Screw - M4	11- 19
VFS3 0089	Bevel Gear	5- 19g
VFS3 0089	Bevel Gear	15- 26g
VFS3 0155	Gear - 30T	23- 4
VFS3 0833	Gear - 18T/48T	29- 20
VFS3 0834	Gear - 18T/56T	29- 11
VFS3 0835	Gear Pulley - 30T/18T	21- 10
VFS3 0835	Gear Pulley - 30T/18T	25- 10
VFS3 0836	Gear - 100T/21T	27- 31
VFS3 0895	Gear - 12T	31- 11a
VFS3 0896	Gear - 18T/53T	31- 11b
VFS3 0897	Gear - 18T/53T	31- 11c
VFS3 0898	Gear - 53T	31- 11d
VFS3 0899	Gear - 53T	31- 11e
VFS3 2132	Spring	27- 32
VFS3 2178	Rear Guide Spring	15- 23
VFS3 2184	Lever Spring	27- 2
VFS3 2822	Release Paper Spring	21- 2f
VFS3 2822	Release Paper Spring	25- 2f
VFS3 2823	Spring	31- 3
VRG1 0424	Sensor Ass'y	17- 14c
VRG1 0424	Sensor Ass'y	19- 14c
VRS1 1054	Bushing	23- 3
VVD5 0161	Huse - 125V 1AS	17- 9d
VVD5 0161	Huse - 125V 1AS	19- 9d
VWC4 0237	Microswitch	21- 40

Part No.	Description	Page and Index No.
VWC4 0237	Microswitch	25- 39
VWC4 0246	Microswitch	29- 14a
VWC4 0246	Microswitch	31- 5a
VWC4 5014	Microswitch	29- 8
VWG8 0164	Photointerrupter	21- 25
VWG8 0164	Photointerrupter	23- 14
VWG8 0164	Photointerrupter	25- 25
VWG8 0164	Photointerrupter	27- 33
VWG8 5038	Photointerrupter	5- 19
VWG8 5038	Photointerrupter	9- 12
VWG8 5038	Photointerrupter	15- 26
VWT2 0256	Edge Sadle	9- 9
VWT2 5035	Edge Sadle	5- 16
VWT2 5035	Edge Sadle	15- 20
VXA9 0679	Screw	11-103
VXF9 0217	Timing Belt - 63T	29- 19
VXF9 0369	Timing Belt	21- 7
VXF9 0369	Timing Belt	25- 7
VXG9 0013	Ball Bearing	25- 9
VXG9 0097	Bearing	7- 6
VXG9 0249	Ball Bearing	21- 9
VXZ9 0326	Magnet Catch	9- 4
VXZ9 0326	Magnet Catch	17- 11
VXZ9 0326	Magnet Catch	19- 11

Part No.	Description	Page and Index No.
0312 6030W	Philips Pan Head Screw - M2.6x3	29-103
0353 0040D	Philips Pan Head Screw - M3x4	17-104
0353 0040D	Philips Pan Head Screw - M3x4	19-104
0353 0040W	Philips Pan Bind Screw - M3x4	5-100
0353 0040W	Philips Pan Bind Screw - M3x4	9-102
0353 0040W	Philips Pan Bind Screw - M3x4	15-100
0353 0060D	Sunk Screw - 3x6	31-100
0353 0060W	Philips Pan Head Screw - M3x6	9-105
0353 0060W	Philips Pan Head Screw - M3x6	27-102
0353 0060W	Philips Pan Head Screw - M3x6	29-102
0353 0080D	Philips Truus Head Screw - M3x8	17-105
0353 0080D	Philips Truus Head Screw - M3x8	19-102
0353 0080W	Tapping Screw - M3x8	21-102
0353 0080W	Tapping Screw - M3x8	25-102
0353 0160W	Philips Pan Head Screw - M3x16	9-101
0354 0060D	Sunk Screw - 4x6	3-101
0354 0060D	Sunk Screw - 4x6	7-100
0354 0060D	Sunk Screw - 4x6	9-100
0354 0060D	Sunk Screw - 4x6	11-102
0354 0060D	Sunk Screw - 4x6	13-100
0354 0060D	Sunk Screw - 4x6	17-100
0354 0060D	Sunk Screw - 4x6	19-100
0354 0060D	Sunk Screw - 4x6	27-101
0354 0060D	Sunk Screw - 4x6	31-101
0354 0060W	Philips Truus Head Screw - M4x6	17-106
0354 0060W	Philips Truus Head Screw - M4x6	17-108
0354 0060W	Philips Truus Head Screw - M4x6	21-100
0354 0060W	Philips Truus Head Screw - M4x6	23-100
0354 0060W	Philips Truus Head Screw - M4x6	25-100
0354 0060W	Philips Truus Head Screw - M4x6	27-105
0354 0060W	Philips Truus Head Screw - M4x6	29-100
0354 0100D	Sunk Screw - 4x10	13-101
0354 0100Z	Bind Screw - M4x10	7-102
0434 0060W	Tapping Screw - M4x6	27-103
0434 0080W	Tapping Screw - M4x8	27-106

Part No.	Description	Page and Index No.
0553 0060E	Allen Screw - M3x6	5-106
0553 0060E	Allen Screw - M3x6	7-108
0553 0060E	Allen Screw - M3x6	15-106
0554 0060E	Allen Screw - M4x6	5-107
0554 0060E	Allen Screw - M4x6	15-107
0554 0060E	Allen Screw - M4x6	21-106
0554 0060E	Allen Screw - M4x6	25-106
0701 0080Z	Flat Washer - M8	21-104
0701 0080Z	Flat Washer - M8	25-104
0705 0040B	Toothed Washer	3-104
0705 0040B	Toothed Washer	5-102
0705 0040B	Toothed Washer	7-103
0705 0040B	Toothed Washer	9-106
0705 0040B	Toothed Washer	13-102
0705 0040B	Toothed Washer	15-102
0705 0040B	Toothed Washer	17-107
0705 0040B	Toothed Washer	19-105
0705 0040B	Toothed Washer	27-109
0720 0050Z	Retaining Ring - M5	15-108
0720 0050Z	Retaining Ring - M5	27-110
0720 0050Z	Retaining Ring - M5	29-105
0720 0060Z	Retaining Ring - M6	5-105
0720 0060Z	Retaining Ring - M6	15-105
0725 0080Z	Retaining Ring - M6.4	7-107
0951 2008W	Philips Pan Head Screw W/W - M2x18	29-106
0951 2008W	Philips Pan Head Screw W/W - M2x18	31-104
0951 2010W	Philips Pan Head Screw W/W - M2x10	17-102
0951 2010W	Philips Pan Head Screw W/W - M2x10	23-102
0951 2010W	Philips Pan Head Screw W/W - M2x10	25-105
0951 2010Z	Philips Pan Head Screw W/W - M2x10	19-106
0951 2010Z	Philips Pan Head Screw W/W - M2x10	21-105
0951 3006W	Philips Screw With Flat Waser-M3x6	5-108
0951 3006W	Philips Screw With Flat Waser-M3x6	9-104
0951 3006W	Philips Screw With Flat Waser-M3x6	11-100
0951 3006W	Philips Screw With Flat Waser-M3x6	15-109

Part No.	Description	Page and Index No.
0951 3006W	Philips Screw With Flat Waser-M3x6	27-104
0951 3006W	Philips Screw With Flat Waser-M3x6	29-104
0951 3006W	Philips Screw With Flat Waser-M3x6	31-102
0951 4004W	Philips Screw With Flat Waser-M4x4	27-107
0951 4006W	Philips Screw With Flat Waser-M4x6	3-102
0951 4006W	Philips Screw With Flat Waser-M4x6	5-101
0951 4006W	Philips Screw With Flat Waser-M4x6	7-101
0951 4006W	Philips Screw With Flat Waser-M4x6	9-103
0951 4006W	Philips Screw With Flat Waser-M4x6	11-101
0951 4006W	Philips Screw With Flat Waser-M4x6	15-101
0951 4006W	Philips Screw With Flat Waser-M4x6	17-101
0951 4006W	Philips Screw With Flat Waser-M4x6	19-101
0951 4006W	Philips Screw With Flat Waser-M4x6	21-101
0951 4006W	Philips Screw With Flat Waser-M4x6	23-101
0951 4006W	Philips Screw With Flat Waser-M4x6	25-101
0951 4006W	Philips Screw With Flat Waser-M4x6	27-100
0951 4006W	Philips Screw With Flat Waser-M4x6	27-108
0951 4006W	Philips Screw With Flat Waser-M4x6	29-101
0951 4010W	Philips Screw With Flat Waser-M4x10	3-103
0951 5006Z	Philips Pan Head Screw W/W - M5x6	7-104
0954 0006Z	Philips Pan Head Screw W/W - M4x6	7-105
1105 0312	Spacer	3-100

Part No.	Description	Page and Index No.